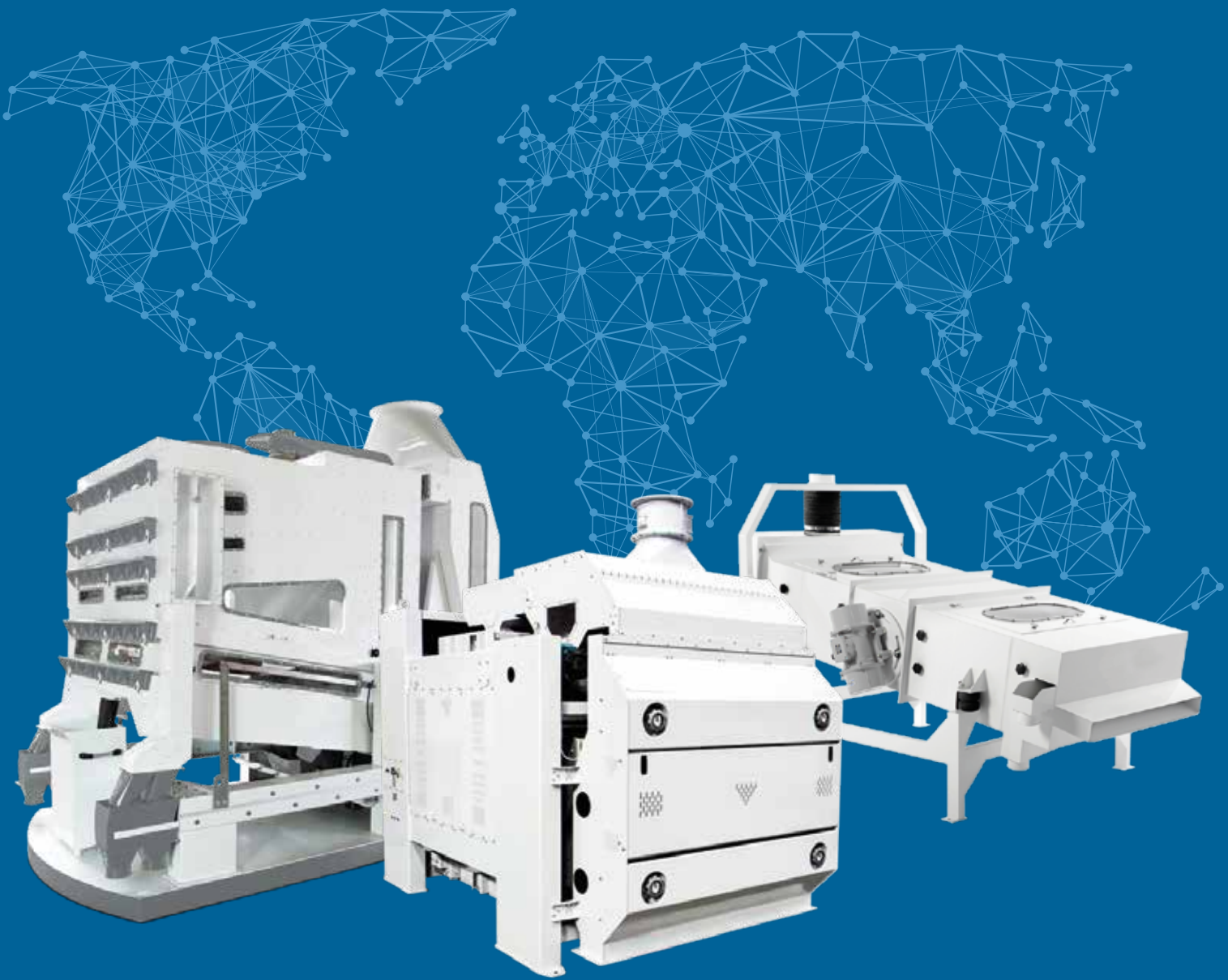


Spare Parts Catalogue







Pneumatic Roller Mill	1
Plansifter	6
Semolina Purifier	11
Bran Finisher	12
Impact Detacher	13
Trieur	14
Destoner	15
Wheat Impact Scourer	16
Vertical Washing & Drying	17
Elevator	18
Screw Conveyor	21
Supersonic Filter	22
Flow Balancer - Air Lock	24
Sewing Machine	25
Rubber Wedge	27
Sheet Equipment	28
Pipe Systems	31
Motor	38
Laboratory	41
Pneumatic	43
Sieve Frame	47
Eco Prime Elevator Bucket	49
Premium Elevator Bucket	52
Exclusive Elevator Bucket	55



About Us

Değirmen Market.com Machinery Manufacturing Ltd. The company has a worldwide experience in flour mill installations, silo and storage systems installations and feed mill installations since the day it was founded and with its previous experience. It has been designed in the most appropriate way by experienced engineers and technical people with tailor-made solutions, which is a requirement of the sector, and has signed efficient and high-capacity projects by considering the price-benefit relationship.

Our company has become one of the most important after-sales service companies in the sector. Working on the basis of customer satisfaction, Değirmen Market.com has serious and strong references. It has successfully run and delivered many turnkey and solution projects. It has a rising value in the industry. Our company, which strengthens its marketing and after-sales network day by day, and makes solution partnerships with sister companies, develops by operating as a business partner in large consortia. Değirmen Market.com, which can find active and appropriate solutions to the innovations of technology and the needs of the sector, and provides fast service, will continue to add value to the sector with the projects it makes for its customers.

Our Mission

We offer you solutions. With the help we will be happy to provide within the body of Mill Market.com Machinery Systems, you, our valued customers, can turn your projects into reality in the most efficient and effective way possible.

Our Vision

As Değirmen Market.com, we identify the needs and problems of entrepreneurs with all our employees and offer them solutions and absolute satisfaction.



DMVG - 101 Roll (Break- Smooth)

Code	Type	Technical Features		
		Volume by Sea (m ³)	Cylinders Diameter (mm)	Cylinders Length (mm)
DMVG-101	250/800	4,5	Ø250	800
	250/1000	5,0		1000
	250/1250	5,6		1250
	300/800	4,5	Ø300	800
	300/1000	5,5		1000
	300/1250	6,2		1250



DMVG - 102 Roller Mills Gear

Code	Type	Ø (mm)
DMVG-102	44/36D (Smooth)	70
	56/24D (Break)	70



DMVG - 103 Roller Mills Pulley Set (Break - Smooth)

Code	Taper Bush	PL 22 Groove															
		Hole Diameter															
DMVG-103	1610	14	16	18	19	20	22	24	25	28	30	32	35	38	40	-	-
	1615	14	16	18	19	20	22	24	25	28	30	32	35	38	40	-	-
	2012	18	19	20	22	24	25	28	30	32	35	38	40	42	45	48	50
	2017	18	19	20	22	24	25	28	30	32	35	38	40	42	45	48	50
	2517	20	22	24	25	28	30	32	35	38	40	42	45	48	50	55	60
	2525	20	22	24	25	28	30	32	35	38	40	42	45	48	50	55	60
	3020	25	28	30	32	35	38	40	42	45	48	50	55	60	65	70	75
	3030	25	28	30	32	35	38	40	42	45	48	50	55	60	65	70	75
	3525	35	38	40	42	45	48	50	55	60	65	70	75	80	85	90	-
	3535	35	38	40	42	45	48	50	55	60	65	70	75	80	85	90	-
	4030	40	42	45	48	50	55	60	65	70	75	80	85	90	95	100	-
	4040	40	42	45	48	50	55	60	65	70	75	80	85	90	95	100	-





DMVG - 104
Roller Mills With Pim - V Pulley

Code	V17				
	Type	Diameter	Outside Diameter	Pulley Type	Bush
DMVG-103	140/3	140	147	3	2517
	150/3	150	157	3	2517
	160/3	160	167	3	2517
	170/3	170	177	3	3020
	180/3	180	187	3	3020
	190/3	190	197	3	3020
	200/3	200	207	3	3020
	212/3	212	219	3	3020
	224/3	224	231	3	3020
	236/3	236	243	3	3535
	250/3	250	257	3	3535



DMVG - 105
Roller Mill Fixed Housing



DMVG - 106
Roller Mill Moving Housing (Left - Right)



DMVG - 107
Fork (Left - Right)



Code DMVG-106-L DMVG-106-R

Code DMVG-107-L DMVG-107-R

DMVG - 108
Roller Mill Fixing Adjustment Handle (Left - Right)



DMVG - 109
Roller Mill Adjustment Handle (Left - Right)



DMVG - 110
Spanner Wedge



Code DMVG-108-L DMVG-108-R

Code DMVG-109-L DMVG-109-R

Code DMVG-110-L DMVG-110-R

DMVG - 111
Pneumatic Roller Mill Fixed Housing (Left - Right)



DMVG - 112
Pneumatic Roller Mill Move Housing



DMVG - 113
Piston Handle Casting (Left - Right)



Code DMVG-111-L DMVG-111-R

Code DMVG-112-L DMVG-112-R

Code DMVG-113-L DMVG-113-R

DMVG - 114
Roller Mill Housing Wedge



DMVG - 115
Pneumatic Roller Mill Dump of Big Connection Piston- 1



DMVG - 116
Pneumatic Roller Mill Dump of Big Connection Piston- 2





**DMVG - 117
Polly V Belts**

Code	Type	Ø (mm)
DMVG-117	Polly V Belts	22 DPL 1765
	Triger Time Belts	8M36PK1760



**DMVG - 118
V Belts**



**DMVG - 119
Roll Pressing Wedge**



**DMVG - 120
Mould Spring Wedge**



**DMVG - 121
Mould Spring Wedge Washer**



**DMVG - 122
Roller Mill Rove**



**DMVG - 123
Roller Mill Adjust Mechanism (Set)**



**DMVG - 124
Roller Mill Roll Tension Shaft**



**DMVG - 125
Roller Mill Adjust Housing**



**DMVG - 126
Roller Mill Turning Plastic**



**DMVG - 127
Roller Mill Turning**



**DMVG - 128
Roller Mill Clock**



**DMVG - 129
Roller Mill Housing Aluminium Cover (Front)**



**DMVG - 130
Roller Mill Housing Aluminium Cover (Rear)**



**DMVG - 131
Pneumatic Roller Mill Housing Aluminium Cover (Front/Left)**





DMVG - 132
Pneumatic Roller Mill Housing Aluminium Cover (Front/Right)



DMVG - 133
Pneumatic Roller Mill Housing Aluminium Cover (Rear)



DMVG - 134
Pneumatic Roller Mill Housing Tension Spring



DMVG - 135
Roller Mill Glass



DMVG - 136
Roller Mill Roll Rubber With Sheet



DMVG - 137
Roller Mill Pan Sealing Rubber



DMVG - 138
Cylinder Installing - Dismantling Hydraulic Apparatus



DMVG - 139
Roller Mill Brush Mechanism

Code	Size (mm)
DMVG-139-60	600
DMVG-139-80	800
DMVG-139-100	1000
DMVG-139-125	1250
DMVG-139-150	1500



DMVG - 140
Roller Mill Brush Mechanism

Code	Size (mm)
DMVG-140-60	600
DMVG-140-80	800
DMVG-140-100	1000
DMVG-140-125	1250
DMVG-140-150	1500



DMVG - 141
Roller Mill Brush (For Smoot Rolls)(Smoot)



Code	Size (mm)	Lenght (mm)			
DMVG-141-2527	25x27	800	1000	1250	1500
DMVG-141-3030	30x30	800	1000	1250	1500
DMVG-141-3040	30x40	800	1000	1250	1500
DMVG-141-4040	40x40	800	1000	1250	1500

DMVG - 142
Roller Mill Brush (For Break Rolls) Break



Code	Size (mm)	Lenght (mm)			
DMVG-142-2527	25x27	800	1000	1250	1500
DMVG-142-3030	30x30	800	1000	1250	1500
DMVG-142-3040	30x40	800	1000	1250	1500
DMVG-142-4040	40x40	800	1000	1250	1500



DMVG - 143
Feeder Timing Belt

Code	Type	Dimensions	Width
DMVG-143	5M	350	25
		375	25
		400	25
		425	25
		450	25
		475	25
		500	25
		525	25



DMVG - 144
Roller Mill Feed Roll
(Conveyor Type)



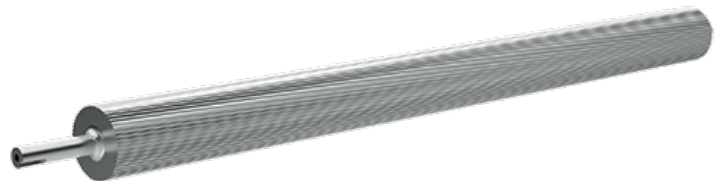
DMVG - 145
Roller Mill Feed Roll (Helical Type)



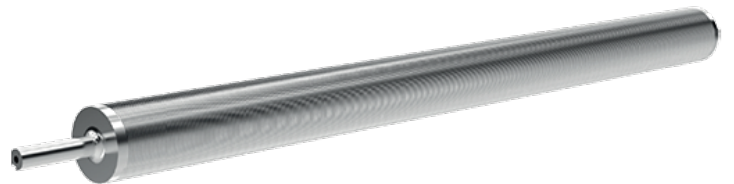
DMVG - 146
Roller Mill Feed Roll (Conveyor Type)



DMVG - 147
Roller Mill Feed Roll (Helical Type)



DMVG - 148
Roller Mill Feed Roll (Order Type)



DMVG - 149
Roller Mill Feed Roll (Vertical Type)





DMKE - 101
Plansifter Pulley

Code	Type	Diameter	Groove	Bush	Max. Bore	Pulley Type	FxL
DMKE-101	112/2	112x119	2	1610	42	2	44x25
	118/2	118x125	2	1610	42	2	44x25
	118/4	118x125	4	1610	42	2	63x25
	450/2	450x457	2	3020	75	4	44x51
	500/4	500x507	4	3535	90	6	82x89



DMKE - 102
Plansifter Housing (Big)

Code	Passage
DMKE-104-6	6
DMKE-104-8	8
DMKE-104-8	8



DMKE - 103
Plansifter Housing Covers (Big)



DMKE - 104
Plansifter Housing (Small)

Code	Passage
DMKE-104-6	6
DMKE-104-8	8



DMKE - 105
Plansifter Housing Covers (Small)



DMKE - 106
Plansifter Motor Pulley



DMKE - 107
Plansifter V Belt





DMKE - 109
Plansifter Weight Wedge



DMKE - 110
Plansifter Weight Link Wedge



DMKE - 111
Plansifter Cover Pressing Shoe



DMKE - 112
Plansifter Lifting Jack



DMKE - 113
Plansifter Rod Connection Shoe



DMKE - 114
Plansifter Cover Handle



DMKE - 115
Sponge Sticky Cord



Code	Dimensions(mm)
DMKE-115-01	3x10
DMKE-115-02	3x15
DMKE-115-03	3x20
DMKE-115-04	3x30
DMKE-115-05	3x40
DMKE-115-06	3x50
DMKE-115-07	5x10
DMKE-115-08	5x15
DMKE-115-09	5x20

Code	Dimensions(mm)
DMKE-115-10	5x30
DMKE-115-11	5x40
DMKE-115-12	5x50
DMKE-115-13	10x10
DMKE-115-14	10x15
DMKE-115-15	10x20
DMKE-115-16	10x30
DMKE-115-17	10x40
DMKE-115-18	10x50

DMKE - 116
Sieve Strip Felt



Code	Type	Dimensions(mm)
DMKE-116-S01	S	10
DMKE-116-S02		15
DMKE-116-S03		20
DMKE-116-L01	L	10
DMKE-116-L02		13
DMKE-116-L03		15
DMKE-116-L04		20

Code	Type	Dimensions(mm)
DMKE-116-L05	L	25
DMKE-116-L06		30
DMKE-116-L07		40
DMKE-116-L08		80
DMKE-116-L09		100
DMKE-116-L10		150
DMKE-116-L11		170

DMKE - 117
Plansifter Bottom Bag



Code	DMKE-117				
Diameter (mm)	Ø120				
Lenght (mm)	200	250	300	350	400

DMKE - 118
Plansifter Top Bag



Code	DMKE-118				
Diameter (mm)	Ø200				
Lenght (mm)	200	250	300	350	400

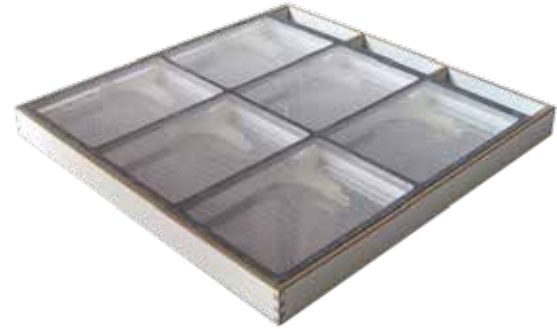


DMKE - 119
Single Sided Adhesive Pad Wicks



Code	Dimensions (mm)
DMKE-119-01	10
DMKE-119-01	15
DMKE-119-01	20

DMKE - 120
Sieve Box



DMKE - 121
Rapid Adhesive



DMKE - 122
Plansifter Fiber Sieves Rods

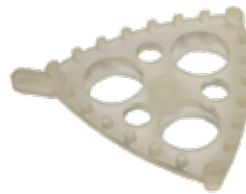


Code	DMKE-122-12					DMKE-122-16				
Diameter (mm)	Ø12					Ø16				
Lenght (mm)	1000	1500	2000	2400	3000	1000	1500	2000	2400	3000

DMKE - 123
Stud Cleaner



DMKE - 124
Stud Cleaner (Double)



DMKE - 125
Cleaner With Brush



DMKE - 126
Cleaner With Brush (Double)



DMKE - 127
Star Cleaner (Stud)



DMKE - 128
Star Cleaner (Brush)



DMKE - 129
Bottom Cleaner



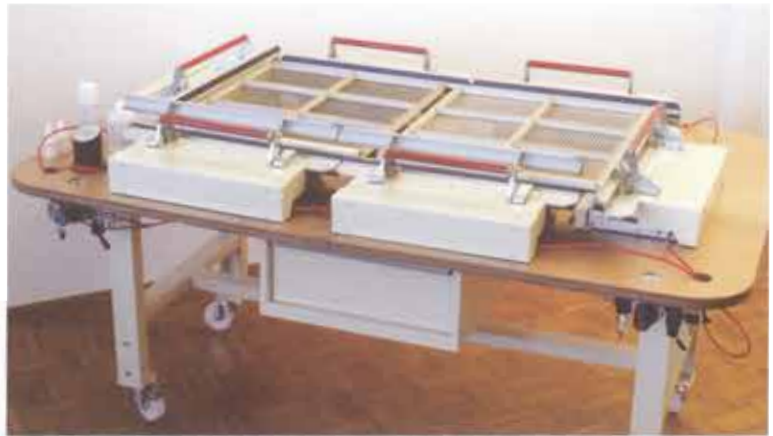
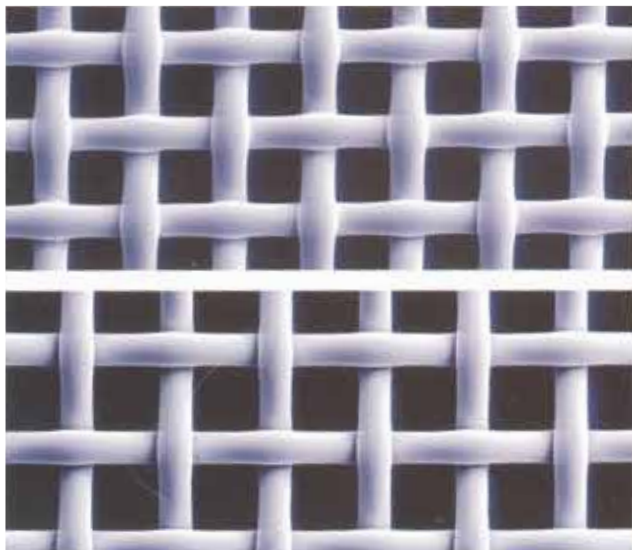
DMKE - 130
Cotton Cleaner



DMKE - 131 Sifter Sieve

Code PA-GG (Grit Gauze)	Mesh Opening	Mesh Count n/cm	Open Area (%)	Width
PA-12 GG	1800	4,4	61	108/132
PA-14 GG	1600	5,0	60	108/132
PA-15 GG	1400	5,4	59	108/132
PA-16 GG	1320	5,8	59	108/132
PA-17 GG	1250	6,1	58	108/132
PA-18 GG	1180	6,5	59	108/132
PA-19 GG	1120	6,7	58	108/132
PA-20 GG	1000	7,5	57	108/132
PA-22 GG	950	8,0	57	108/132
PA-23 GG	900	8,3	56	108/132
PA-24 GG	850	8,7	53	108/132
PA-26 GG	800	9,4	53	108/132
PA-27 GG	750	9,7	52	108/132
PA-28 GG	710	10,5	53	108/132
PA-30 GG	670	10,8	53	108/132
PA-31 GG	630	11,5	53	108/132
PA-32 GG	600	11,9	51	108/132
PA-34 GG	560	12,3	49	108/132
PA-36 GG	530	13,3	50	108/132
PA-38 GG	500	13,7	47	108/132
PA-40 GG	475	15,0	48	108/132
PA-42 GG	450	15,4	48	108/132
PA-44 GG	425	16,0	46	108/132
PA-45 GG	400	16,8	47	108/132
PA-47 GG	375	17,5	47	108/132
PA-50 GG	355	19,4	48	108/132
PA-52 GG	335	20,2	46	108/132
PA-54 GG	315	21,0	44	108/132
PA-58 GG	300	21,7	45	108
PA-60 GG	280	23,8	45	108/132
PA-62 GG	275	24,1	44	108
PA-64 GG	265	25,0	43	108/132
PA-66 GG	250	26,5	46	108/132
PA-68 GG	243	28,0	44	108
PA-70 GG	236	28,0	44	108/132
PA-72 GG	224	29,0	42	108/132
PA-74 GG	212	30,0	40	108/132

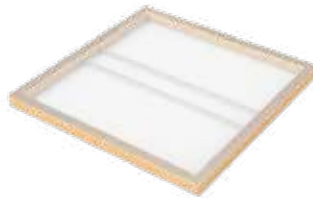
Code PA-XXX (Heavy Quality)	Mesh Opening	Mesh Count n/cm	Open Area (%)	Width
PA-3 XXX	300	21,7	45	108/132
PA-4 XXX	280	23,8	45	108/132
PA-5 XXX	250	26,5	46	108/132
PA-6 XXX	212	30,0	40	108/132
PA-7 XXX	200	30,0	39	108/132
PA-8 XXX	180	36,0	39	108/132
PA-8½ XXX	160	37,5	37	108/132
PA-9 XXX	150	41,0	38	108/132
PA-9½ XXX	140	44,0	37	108/132
PA-10 XXX	132	45,0	40	108/132
PA-10½ XXX	125	48,8	37	108/132
PA-11 XXX	118	49,0	34	108/132
PA-12 XXX	112	55,0	38	108/132
PA-13 XXX	100	57,0	32	108/132
PA-14 XXX	95	60,6	33	108/132
PA-14½ XXX	90	67,0	36	108/132
PA-17 XXX	80	68,0	35	108/132
PA-3HD / ASTM 50	300	19,5	34	108/132
PA-5HD / ASTM 60	250	23,0	34	108/132
PA-6HD / ASTM 70	210	28,5	33	108/132
PA-8HD / ASTM 80	177	33,0	34	108/132
PA-9HD / ASTM 100	150	41,0	38	108/132
PA-11HD / ASTM 120	120	49,0	34	108/132
PA-13HD / ASTM 140	100	57,0	32	108/132



Cinsi Type	Açıklık Hole	İp Sayısı Thread	İp Kalınlığı Thread Thickness	Eleme Sathı Sieving Surface	Kumaş Kalınlığı Cloth Thickness	Genişlik Width
12	1800	4,3	500/500	61	930	104/208
14	1600	5	450/450	60	925	104/208
15	1400	5,4	450/400	59	785	104/208
16	1320	5,8	400/400	59	780	104/208
17	1250	6,1	400/350	59	700	104/208
18	1180	6,5	350/350	59	655	104/208
19	1120	6,8	350/350	58	660	104/208
20	1000	7,6	320/320	58	630	104/208
22	950	8,0	300/300	58	560	104/208
23	900	8,3	300/300	57	580	104/208
24	850	8,7	300/280	56	555	104/208
26	800	9,3	280/280	55	505	104/208
27	750	9,7	280/260	54	495	104/208
28	710	10,3	260/260	54	460	104/208
30	670	10,8	260/240	53	450	104/208
31	630	11,3	240/240	53	440	104/208
32	600	11,9	240/240	51	445	104/208
34	560	12,5	240/220	50	415	104/208
36	530	13,3	220/220	50	400	104/208
38	500	13,9	220/220	50	390	104/208
40	475	14,8	200/200	50	360	104/208
42	450	15,4	200/200	48	365	104/208
44	425	16,0	200/200	46	365	104/208
45	400	17,2	180/180	48	325	104/208
46	390	17,6	180/180	47	325	104/208
47	375	18,0	180/160	47	305	104/208
48	363	18,4	180/160	47	315	104/208
50	355	19,4	160/160	48	300	104/208
52	335	20,2	160/160	46	300	104/208
54	315	21,1	160/160	44	300	104/208
56	308	21,4	160/160	44	300	104/208
58 3	300	23,8	140/140	47	250	104/208
60 4	280	23,8	140/140	45	255	104/208
62	275	24,1	140/140	44	255	104/208
64	265	24,7	140/140	43	255	104/208
66 5	250	27	120/120	46	220	104/208
68	243	27,6	120/120	45	220	104/208
70	236	28,1	120/120	44	220	104/208
72	224	29,1	120/120	43	220	104/208
74 6	212	30,1	120/120	41	225	104/208
7	200	31,3	120/120	39	225	104/208
8	180	35,7	100/100	41	180	104/208
8,5	160	38,5	100/100	38	180	104/208
9	150	41,7	90/90	39	165	104/208
9,5	140	43,5	90/90	37	165	104/208
10	132	47,2	80/80	39	145	104/208
10,5	125	48,8	80/80	37	145	104/208
11	118	50,5	80/80	36	145	104/208
12	112	55,0	70/70	38	130	104/208
12,5	106	55,8	60/50	40	120	104/208
13	100	58,8	70/70	35	130	104/208
14	95	60,6	70/70	33	130	104/208
14,5	90	66,7	60/60	36	100	104/208
15	85	69,0	60/60	35	100	104/208
17	80	71,5	60/60	33	102	104/208



DMIS - 101
Purifier Frame (Wood)



DMIS - 102
Purifier Frame (Aluminium)



DMIS - 103
Purifier Brush (Plastic)



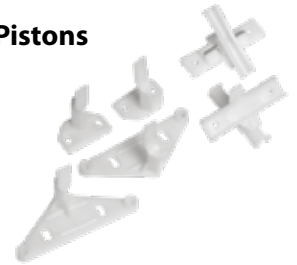
Code	Properties
DMIS-103	44

DMIS - 104
Purifier Brush (Wood)



Code	Properties
DMIS-104	39

DMIS - 105
Purifier Brush Pistons



DMIS - 106
Butterfly Screws



Code	Type	Size (mm)					
DMIS-106-1	M5	20	30	40	50	-	-
DMIS-106-2	M6	20	30	40	50	-	-
DMIS-106-3	M8	20	30	40	50	60	70
DMIS-106-4	M10	20	30	40	50	60	70
DMIS-106-5	M12	20	30	40	50	60	70

DMIS - 105
Purifier Bag



DMIS - 107
Butterfly Nut



Code	Type
DMIS-107-1	M5
DMIS-107-2	M6
DMIS-107-3	M8
DMIS-107-4	M10
DMIS-107-5	M12

DMIS - 109
Purifier Brush Sliding Shaft (CrNi)



DMIS - 108
Aluminium Product Inlet
Glass



DMIS - 110
Purifier Casing Cover Handle



DMIS - 111
Purifier Adjust Handle





DMKF - 101
Bran Finisher Bearing Housing



DMKF - 102
Bran Finisher Housing Bearing

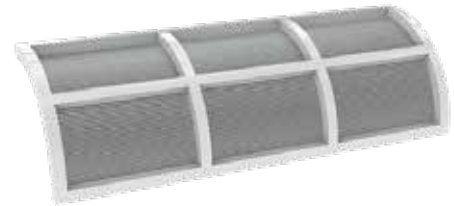
Type
22212 + H312



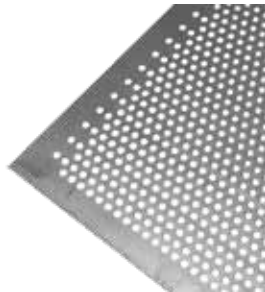
DMKF - 103
Bran Finisher Top Entrance Cages



DMKF - 104
Bran Finisher Liner Cage



DMKF - 105
Bran Finisher Sheet



Code	Ø (mm)	Thickness	Hole (Ø)	Hole Spacing
DMKF-105-01	2000X1000	0,5	0,5	1,00
DMKF-105-02		0,5	0,6	1,20
DMKF-105-03		0,5	0,7	1,40
DMKF-105-04		0,5	0,8	1,50
DMKF-105-05		0,5	1,0	2,00

DMKF - 106
Bran Finisher Wire



Code	Micron	Width (mm)	Length (m)
DMKF-106-24	24/110 x 0,35/0,25	1000	30
DMKF-106-40	40/220 x 0,18/0,14	1000	30
DMKF-106-50	50/250 x 0,14/0,11	1000	30



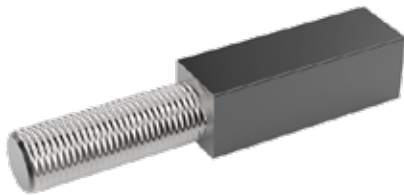
DMIKF - 101
Aluminium Product Inlet Glass



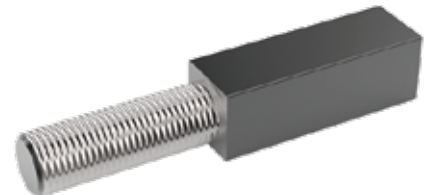
DMIKF - 102
Product Inlet Glass



DMIKF - 103
Impact Detacher Bottom Plate Pin



DMIKF - 104
Impact Detacher Top Plate Pin



DMIKF - 105
Impact Detacher Out Gasket



DMIKF - 105
Impact Detacher Rotor





DMUT - 101
Trieur Drum Casting



DMUT - 102
Trieur Angular Casting



DMUT - 103
Trieur Product Inlet



DMUT - 104
Trieur Transmission



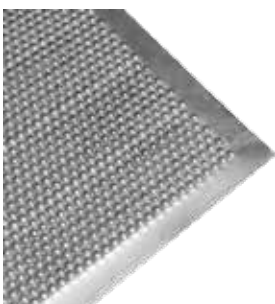
DMUT - 105
Trieur Indicator



DMUT - 106
Trieur Adjustment Wheel



DMUT - 107
Trieur Sheet



Code	Type	Thickness (mm)	Hole Ø (mm)					
			5	5,5	6,5	7	9,5	10,5
DMKF-106-24	100x200	1000x2000	5	5,5	6,5	7	9,5	10,5
	120x240	1200x2400	5	5,5	6,5	7	9,5	10,5
	115x200	1150x2000	-	5,5	6,5	-	9,5	10,5



DMTA - 101
Stone Separator Product Inlet Rubber



DMTA - 102
Stone Separator Aspirastion Rubber



DMTA - 103
Stone Separator Straight Rubber



Code	DMTA - 103												
Diameter Ø (mm)	120	150	200	250	300	350	400	450	500	550	600	650	700
Lenght (mm)	200	200	200	200	200	200	200	200	200	200	200	200	200

DMTA - 104
Stone Separator Product Outlet Rubber

Code	Diameter Ø (mm)
DMTA - 104	120 mm
	150 mm



DMTA - 105
Stone Separator Vibration Spring



DMTA - 106
Stone Separator Vibration Rubber



DMTA - 107
Stone Separator Gauge



DMTA - 108
Stone Separator Wire



Code	Perfored Sheet
DMTA-108-02	129 x 38,5 x 5 mm
	129 x 73,5 x 5 mm

Code	Knitted Wire
DMTA-108-03	140 x 48
	140 x 75

Code	Aluminium Plate
DMTA-108-01	128 x 38,5 mm
	129 x 73,5 mm



DMKS - 101
Horizontal Scourer Rotor
Casting Set (New Model)



Code	Type
DMKS - 101	35 / 60
	45 / 80

DMKS - 102
Horizontal Scourer Rotor
Casting (Set)



Code	Type
DMKS - 102	30 / 100
	30 / 150

DMKS - 103
Horizontal Scourer Bearing
Hoising



DMKS - 104
Horizontal Scourer Hoising
Bearing



DMKS - 105
Horizontal Scourer Sheet



Code	Dimension (mm)
DMKS - 105	500 x 1500

DMKS - 102
Horizontal Scourer Wire



Code	Type
DMKS - 106	35 / 60
	45 / 80



DMDKY - 101
Washing Drying Palette (Set)



Code	Type
DMDKY - 101 - 6	6
DMDKY - 101 - 8	8
DMDKY - 101 - 12	12

DMDKY - 102
Washing Drying Gears (Set)



Code	Gear
DMDKY - 102 - 1	22
DMDKY - 102 - 2	43
DMDKY - 102 - 3	52

DMDKY - 103
Washing Drying Transmission Housing



DMDKY - 104
Galvanized Shutter Sheet



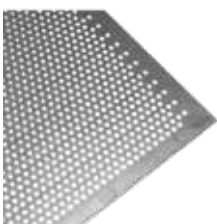
DMDKY - 105
Washing Drying Pulleys



DMDKY - 106
Washing Drying Spiral



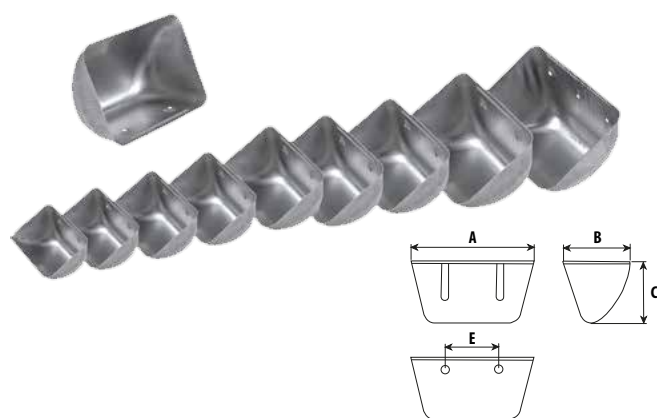
DMDKY - 107
Round Perforated Sheet



Code	Type	Hole Ø (mm)	Thickness							
			1,00 (100x200)	1,00 (120x240)	1,20 (100x240)	1,50 (100x200)	2,00 (100x200)	2,50 (100x200)	3,00 (100x200)	4,00 (100x200)
DMDKY -107	20	2,00	x	x		x				
	25	2,50	x			x				
	30	3,00	x	x	x	x	x			
	40	4,00			x		x	x	x	
	50	5,00						x	x	x
	60	6,00								x

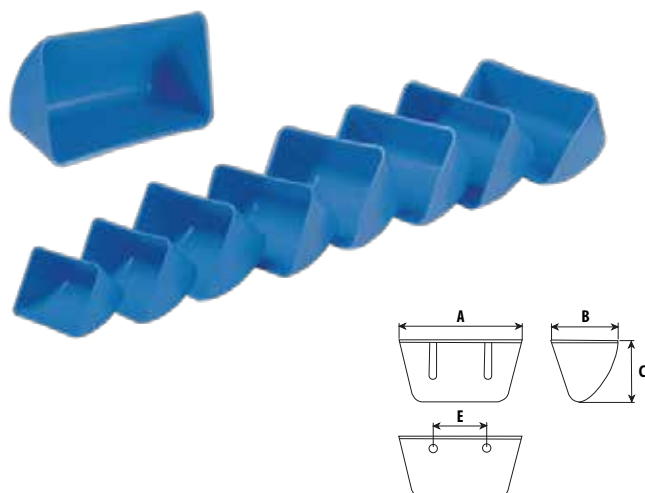


DMKB - 101
Elevator Buckets (Sheet)



Code	Type	Dimensions (mm)					
		A	B	C	E	Lt.	Kg.
DMKB - 101	90	98	95	71	46	0,310	0,250
	100	110	103	77	57	0,325	0,325
	120	126	114	87	67	0,585	0,510
	140	148	133	96	85	0,820	0,750
	160	170	143	103	101	1,140	1,035
	180	188	148	110	110	1,270	1,240
	200	209	160	136	130	1,730	1,550
	225	235	166	133	140	2,345	2,315
	240	240	175	130	120	2,505	2,252
	250	260	168	137	154	2,755	2,590
	280	280	180	115	190	2,950	2,770
	300	310	180	136	205	3,890	3,680
	320	320	220	150	200	6,251	4,474

DMKB - 102
Elevator Buckets (Plastic)



Code	Type	Dimensions (mm)					
		A	B	C	E	Lt.	Kg.
DMKB - 101	100	107	100	75	46	0,242	0,330
	120	125	115	85	57	0,382	0,510
	140	145	135	95	85	0,581	0,750
	160	165	145	105	101	0,775	1,040
	180	185	145	110	110	1,006	1,250
	200	205	160	120	130	1,588	1,550
	225	230	165	130	140	2,101	2,320
	250	260	168	135	154	2,505	2,600
	280	295	195	140	190	3,455	2,800
	300	315	200	150	205	4,221	3,700
	320	340	212	160	215	5,022	4,250



DMKB- 103
Elevator Pulley



Code	DMKB - 103										
Diameter (mm)	250	300	300	320	400	400	500	500	600	630	700
	150	140	160	190	220	240	260	360	280	440	360

DMKB - 104
Elevator Belts (Rubber)



Code	Width (mm)	Layer													
		2	3	4	5	6	7	8	9	10					
DMKB - 104	40	-	x	x	x										
	50	-	x	x	x										
	60	-	x	x	x										
	70	-	x	x	x										
	80	-	x	x	x										
	90	-	x	x	x										
	100	-	-	x	x	x									
	110	-	-	x	x	x									
	125	-	-	x	x	x									
	140	-	-	x	x	x	-	x							
	160	-	-	x	x	x	-	x							
	180	-	-	x	x	x	x	x							
	200	-	-	x	x	x	x	x							
	220	-	-	-	x	x	x	x							
	250-280	-	-	-	x	x	x	x							
	310	-	-	-	-	x	x	x							
350	-	-	-	x	x	x	x								
400-450	-	-	x	-	x	-	x	x	x						
500-600	-	-	x	-	x	x	x	x	x	x					

DMKB - 105
Elevator Belts (Cloth)



Code	Width (mm)	Layer				
		2	3	4	5	6
DMKB - 105	160	-	-	x	x	x
	180	-	-	x	x	x
	200	-	-	x	x	x
	220	-	-	-	x	x
	250-280	-	-	-	x	x
	310	-	-	-	-	x
	350	-	-	-	x	x
	400-450	-	x	x	-	x
500-600	-	x	x	-	-	

DMKB - 106
Belt Punch



Code	Type	ØD (mm)	L (mm)	5	6
DMKB - 106	3	3	105	35	10
	4	4	105	40	10
	5	5	110	50	10
	6	6	110	60	10
	7	7	115	75	10
	8	8	115	90	10
	9	9	120	100	10
	10	10	120	110	10
	11	11	125	130	5
	12	12	125	165	5
	13	13	130	165	5
	14	14	130	180	5
	15	15	135	245	5
	16	16	135	300	5
	17	17	140	365	5
	18	18	140	380	5
	19	19	145	405	5
	20	20	145	450	5
	21	21	150	250	5
	22	22	150	260	5
	23	23	160	305	5
	24	24	160	320	5
	25	25	170	365	5
	26	26	170	365	5
	27	27	180	415	5
	28	28	180	420	5
	29	29	190	465	5



DMKB - 107
Bearing With Housing



DMKB - 108
SN Bearing With Housing



Code	Type	Code	Type
DMKB-107	30 SN 507	DMKB-107	60 SN 513
	35 SN 508		65 SN 515
	40 SN 509		70 SN 516
	45 SN 510		75 SN 517
	50 SN 511		80 SN 518
	55 SN 512		100 SN 522

DMKB - 109
Elevator Pulley



Code	Type	Bearing No			
		UCF	UCFL	UCT	UCP
DMKB -109	204	x	x	x	x
	205	x	x	x	x
	206	x	x	x	x
	207	x	x	x	x
	208	x	x	x	x
	209	x	x	x	x
	210	x	x	x	x
	211	x	x	x	x
	212	x	x	x	x
	213	x	x	x	x
	214	x	x	x	x
	215	x	x	x	x
	216	x	x	x	x
	217	x	x	x	x
218	x	x	x	x	

DMKB - 110
Elevator Flat Headed Bolts



Code	Type
DMKB-110	M8 x 30
	M8 x 40
	M10 x 30
	M10 x 40

DMKB - 111
Belt Paste





**DMVH - 101
Screw Sheet**



Code	ØD (mm)	ØD (mm)	L (mm)
DMVH-101-01	80	27	80
DMVH-101-02	100	27	100
DMVH-101-03	100	34	100
DMVH-101-04	125	27	125
DMVH-101-05	125	37	125
DMVH-101-06	130	27	130
DMVH-101-07	130	34	130
DMVH-101-08	145	34	145
DMVH-101-09	145	42	145
DMVH-101-10	145	49	145
DMVH-101-11	150	34	150

Code	ØD (mm)	ØD (mm)	L (mm)
DMVH-101-12	165	42	165
DMVH-101-13	180	42	180
DMVH-101-14	200	49	200
DMVH-101-15	200	60	200
DMVH-101-16	220	49	220
DMVH-101-17	250	60	250
DMVH-101-18	270	60	270
DMVH-101-19	300	76	300
DMVH-101-20	325	76	325
DMVH-101-21	350	90	350
DMVH-101-22	380	102	380

**DMVH - 102
Screw Hanger Housing**



Code	Diameter Ø(mm)
DMVH-102-01	40
DMVH-102-02	50
DMVH-102-03	60

**DMVH - 103
Screw Hanger Housing
(Adjust Model)**



Code	Diameter Ø(mm)
DMVH-103-01	40
DMVH-103-02	50
DMVH-103-03	60

**DMVH - 104
Screw Hanger Housing
(Connector Model)**



Code	Diameter Ø(mm)
DMVH-104-01	40
DMVH-104-02	50
DMVH-104-03	60

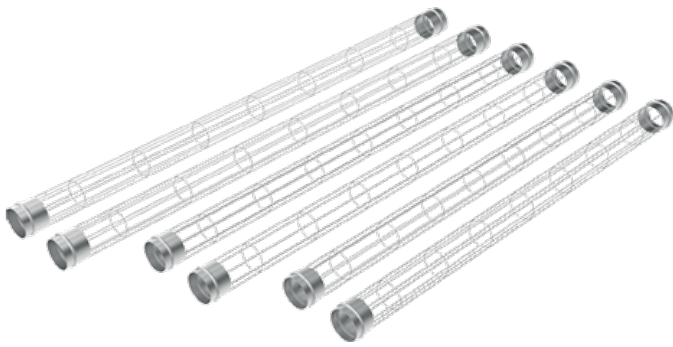
**DMVH - 105
Hanger Bearing Wedge**



Code	Diameter Ø(mm)
DMVH-105-01	40
DMVH-105-02	50
DMVH-105-03	60

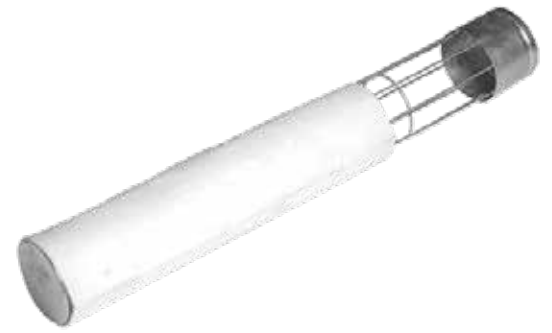


**DMSF - 101
Filter Wire**



Code	Diameter Ø(mm)	Lenght (mm)
DMSF-101	120	1000
	120	1500
	120	1800
	120	2000
	120	2400
	120	2400
	120	3000

**DMSF - 102
Filter Bag**



Code	Diameter Ø(mm)	Lenght (mm)
DMSF-102	120	1000
	120	1500
	120	1800
	120	2000
	120	2400
	120	2400
	120	3000



DMSF - 103
Aluminium Diaphragm (Large)



DMSF - 104
Aluminium Diaphragm (Small)



DMSF - 105
Filter Diaphragm (Silicone)



DMSF - 106
Filter Diaphragm (Rubber)



DMSF - 107
Filter Diaphragm (With Sheet)



DMSF - 108
Filter Gauge (Manometer)



DMSF - 109
Aluminium Diaphragm Washer



DMSF - 110
Diaphragm ATSYPring



DMSF - 111
Filter Overflow Valve



DMSF - 112
Jet Impulse Filter Valve



DMSF - 113
Filter Card



DMSF - 114
Filter Timer





DMHK - 101
Chain Coupling (Set)



Code	Type	1/2"	5/8"	3/4"	1"
DMHK-101	4020	x	-	-	-
	5018	-	x	-	-
	5020	-	x	-	-
	6020	-	-	x	-
	6022	-	-	x	-
	8020	-	-	-	x

DMHK - 102
Chain Coupling



Code	Type
DMHK-102	3/8"
	1/2"
	5/8"
	3/4"
	1"

DMHK - 103
Star Coupling



Code	Type	ØA	ØB	H
DMHK-103	90	80	51	93
	110	95	60	106
	130	110	72	116
	150	125	80	118
	180	140	93	131
	200	160	107	136

DMHK - 104
Star Coupling Rubber



Code	Type
DMHK-104	90
	110
	130
	150
	180
	200

DMHK - 105
Elastic Gear Couplin



Code	Type
DMKB-107	DK 14
	DK 24
	DK 28
	DK 32
	DK 38
	DK 42
	DK 48
	DK 55
	DK 60

DMHK - 106
Chain - Lock - Semi Supplement



Code	Type	Pitch	Chain	Lock	Half Join
DMHK-106	Z / 01	3/8"	I-II-III	I-II-III	I-II-III
	Z / 02	1/2"	I-II-III	I-II-III	I-II-III
	Z / 03	5/8"	I-II-III	I-II-III	I-II-III
	Z / 04	3/4"	I-II-III	I-II-III	I-II-III
	Z / 05	1"	I-II-III	I-II-III	I-II-III
	Z / 06	1x1/4"	I-II-III	I-II-III	I-II-III
	Z / 07	1x1/2"	I-II-III	I-II-III	I-II-III
	Z / 08	1x3/4"	I-II-III	I-II-III	I-II-III
	Z / 09	2"	I-II-III	I-II-III	I-II-III
	Z / 10	2x1/2"	I-II-III	I-II-III	I-II-III

DMYP - 101
Fixed Sewing Machine
(Newlong DS-9C)



DMYP - 102
Fixed Sewing Machine
(Union Special 80800RL)



DMYP - 103
Fixed Sewing Machine (Fiscbein HEAD 100)



DMYP - 104
Fixed Sewing Machine (Newlong NP-7A)



DMYP - 105
Polyester Sewing Yarn



DMYP - 106
Crepe Paper



DMYP - 107
Sewing Machine Needle
(Fiscbein - Newlong)



DMYP - 108
Balancer



DMYP - 109
Sewing Machine Crepe Apparatus



DMYP - 110
Sewing Machine Handle



DMYP - 111 Steel Gears



Code	Type				
	Z	1/2"	5/8"	3/4"	1"
DMYP -111	11	51,3	64,8	78,0	104,4
	12	54,9	69,4	83,3	111,5
	13	60,0	75,5	91,0	121,4
	14	63,8	80,3	96,5	129,1
	15	67,6	84,9	102,1	136,4
	16	71,4	89,7	108,0	144,0
	17	75,2	94,5	113,6	151,9
	18	79,0	99,3	119,4	150,5
	19	82,8	104,2	125,2	167,4
	20	88,4	110,8	133,1	177,8
	21	92,2	115,8	139,2	185,7
	22	96,3	120,7	145,1	193,6
	23	100,1	125,8	150,9	201,4
	24	104,2	130,6	157,0	209,3
	25	108,2	135,7	162,8	217,4
	26	112,0	140,5	168,9	225,3
	27	115,8	145,6	174,8	233,2
	28	119,9	150,4	180,9	241,3
	29	124,0	155,5	186,7	249,2
	30	127,8	160,6	192,8	257,3
	31	131,9	165,4	198,6	265,2
	32	135,9	170,5	204,7	273,3
	33	140,0	175,5	210,8	281,2
	34	143,8	180,4	216,7	289,3
	35	147,9	185,4	222,8	297,2
	36	151,9	190,5	228,9	305,3
	37	156,0	195,5	234,7	313,2
	38	160,0	200,4	240,8	321,3
	39	163,8	205,5	246,9	329,2
	40	167,9	210,6	252,8	337,3
	41	172,0	215,4	258,9	345,5
	42	175,8	220,5	264,9	353,3
43	179,8	225,5	270,8	361,5	
44	193,9	230,7	276,9	369,6	
45	188,0	235,7	283,0	377,5	

Code	Type				
	Z	1/2"	5/8"	3/4"	1"
DMYP -111	46	192,0	240,6	289,1	385,6
	47	196,1	245,6	294,9	393,7
	48	199,9	250,7	301,0	401,0
	49	204,0	255,8	307,1	409,7
	50	208,0	260,9	313,2	417,9
	51	212,1	265,7	319,0	425,7
	52	216,2	270,8	325,1	433,9
	53	220,2	275,9	331,2	442,0
	54	224,3	280,9	337,3	450,1
	55	228,1	286,0	343,4	458,0
	56	232,2	290,9	349,3	466,1
	57	236,2	295,9	355,4	474,2
	58	240,3	301,0	361,5	482,1
	59	244,4	306,1	367,6	490,2
	60	248,4	311,2	373,7	498,4
	61	252,5	316,3	379,5	506,5
	62	256,3	321,1	385,6	514,4
	63	260,4	326,2	391,7	522,5
	64	264,4	331,2	397,8	530,6
	65	268,5	336,3	403,9	538,7
	66	272,6	341,4	409,7	546,6
	67	276,6	346,5	415,8	554,8
	68	280,7	351,6	421,9	562,9
	69	284,8	356,5	428,0	571,0
	70	288,6	361,4	434,1	578,9
	71	292,6	366,5	440,2	587,0
	72	296,7	371,6	446,0	595,1
	73	300,8	376,7	452,1	603,3
	74	304,8	381,8	458,2	611,1
	75	308,9	386,9	464,3	619,3
	76	313,0	391,7	470,4	627,4
	77	317,0	396,8	476,5	635,5
	78	321,1	401,9	482,4	643,7
	79	324,0	406,9	488,5	651,5
80	329,0	412,0	494,6	659,7	

DMYP - 112 Bearings



Code	Type
DMYP-112-01	22315 EK/C3
	22317 E/C3
	22318 E/C3
	22211 H311
	22212 H312
	1215 H315

Code	Type
DMYK-112-02	6003 ZZ
	6205 ZZ
	6205 ZZ
	6207 ZZ
	6208 ZZ
	6209 ZZ
	6210 ZZ
	6211 ZZ

Code	Type
DMYK-112-02	6213 ZZ
	6214 ZZ
	6215 ZZ
	6216 ZZ
	6305 ZZ
	6306 ZZ
	6307 ZZ
	6308 ZZ

Code	Type
DMYK-112-02	6309 ZZ
	6310 ZZ
	6311 ZZ
	6312 ZZ
	6313 ZZ
	6314 ZZ
	6315 ZZ
	6316 ZZ

DMYP - 113
7236 Wedge



DMYP - 114
7237 Wedge



DMYP - 115
7281 Wedge



DMYP - 116
Motor Wedge



DMYP - 117
Vibration Wedge



DMYP - 118
Roller Wedge



DMYP - 119
Round Wedge



DMYP - 120
Rubber Blower



DMYP - 121
Rubber Collars



Code	Type		
DMYP-121	048	090	0130
	053	095	0135
	057	0100	0140
	060	0102	0145
	063	0108	0150
	068	0110	0155
	070	0115	0160
	076	0120	0180
	083	0125	0210

DMYP - 122
Rubber Bracket



DMYP - 123
Flour Flaps



DMYP - 124
Rubber Caps

Code	Type Ø(mm)
DMYP - 124	100
	120
	150



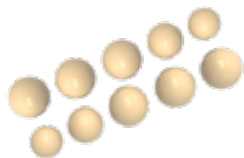
DMYP - 125
Square Rubber



DMYP - 126
Rubber Mallet Cover



DMYP - 127
Rubber Balls



Code	Type Ø (mm)
DMYP - 127	025
	030
	035
	038
	040

DMYP - 128
Coralette Sealing



Code	Type Ø (mm)
DMYP - 128	025
	030
	035
	038
	040

DMYP - 129
Air Lock Mica Glass

Code	Type
DMYP - 129	145x150
	165x150



DMYP - 130
Pneumatik Glasses



Type	L	Type	L
057	300	0114	300
060	300	0120	300
063	300	0127	300
070	300	0130	150
076	300	0140	300
083	300	0145	150
089	300	0150	300
0102	300	0160	300
0108	300	0165	150

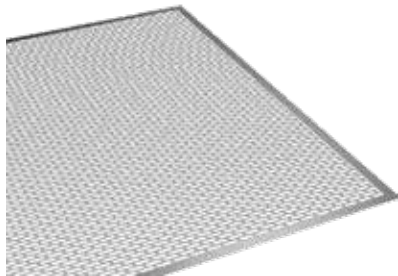
DMYP - 131
Sanding Rubber



DMYP - 130
Vibro Feeder Hopper Rubber

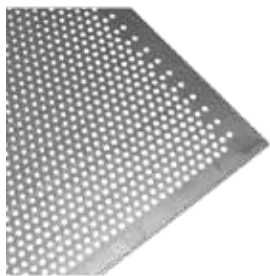


DMYP - 133
Ovally Perforated Sheet



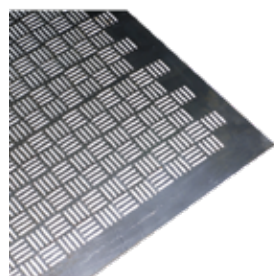
Code	Type	Thickness	Layer			
			1,25x20(mm)	1,5x20(mm)	1,75x20(mm)	2,00x20(mm)
DMYP-133	10	1,00 (mm) 100x200	x	x	x	x
	10	1,00 (mm) 120x240	x	x	x	x
	10	1,50 (mm) 100x200		x	x	x

DMYP - 134
Round Perforated Sheet



Code	Type	Hole Ø (mm)	Thickness							
			1,00 (100x200)	1,00 (120x240)	1,20 (100x200)	1,50 (100x200)	2,00 (100x200)	2,50 (100x200)	3,00 (100x200)	4,00 (100x200)
DMYP-134	20	2,00	x	x		x				
	25	2,50	x			x				
	30	3,00	x	x	x	x	x			
	40	4,00			x		x	x	x	
	50	5,00						x	x	x
	60	6,00								x

DMYP - 135
Terso Sheet



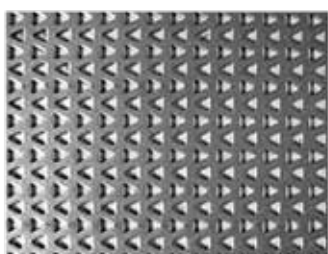
Code	Type	Thickness	Hole Ø(mm)	
			4x40	6x40
DMYP-135	10	1,00 100x200	x	x

DMYP - 136
Galvanized Shutter Sheet



Code	Type Ø(mm)
DMYP - 136	1000x2000 (mm)
	1200x2400 (mm)

DMYP - 137
Triangular Sheet



Code	Thickness	Hole (mm)
DMYP-137	1,00(mm) 100x200	3x3x3

DMYP - 138
Telora Wire



**DMYP - 139
Loading
Conveyor**



Code	Model	Type	Diameter Ø (mm)	Motor Power	Lenght
DMYP-139-01	Saw	600	600	2hp / 1,5 kw	6 m
				2hp / 1,5 kw	8 m
				2hp / 1,5 kw	9 m
				2hp / 1,5 kw	10 m
				3hp / 1,5 kw	12 m

Code	Model	Type	Diameter Ø (mm)	Motor Power	Lenght
DMYP-139-02	Pallet	600	600	2hp / 1,5 kw	6 m
				2hp / 1,5 kw	8 m
				2hp / 1,5 kw	9 m
				3hp / 1,5 kw	10 m
				3hp / 1,5 kw	12 m

**DMYP - 140
Screw Conveyor With Leg**



Code	Type	Lenght	Diameter(mm)	Motor Power	Capacity
DMYP-140-01	165	6,4 m	165	4hp / 3 kw	25 t/h
		8 m		5,5hp / 4 kw	25 t/h
		10 m		7,5hp / 5,5 kw	25 t/h
		12 m		7,5hp / 5,5 kw	25 t/h
		14 m		10hp / 7,5 kw	25 t/h
		15 m		10hp / 7,5 kw	25 t/h
		17 m		10hp / 7,5 kw	25 t/h

Code	Type	Lenght	Diameter(mm)	Motor Power	Capacity
DMYP-140-02	192	6,4 m	192	5,5hp / 4 kw	50 t/h
		8 m		7,5hp / 5,5kw	50 t/h
		10 m		7,5hp / 5,5 kw	50 t/h
		12 m		10hp / 7,5 kw	50 t/h
		14 m		10hp / 7,5 kw	50 t/h
		15 m		10hp / 7,5 kw	50 t/h
		17 m		10hp / 7,5 kw	50 t/h

**DMYP - 141
Conveying Loading Belt**



**DMYP - 142
Tape Roll**



**DMYP - 143
Cast Belt Pins**



**DMYP - 144
Conveyor Belt Pins**



DMYP - 145
Bucket Dampening



DMYP - 146
Bucket Dampening
(Chrome Nickel)



DMYP - 147
Dampening Bucket



DMYP - 148
Rubber Hammer



DMYP - 149
Flour Card



DMYP - 150
Transpalette



DMYP - 151
Weihing Machine



DMYP - 152
Aluminium Shovel



DMYP - 153
Adjustable Clamp



DMYP - 154
Strip Clamp



DMYP - 155
Aluminium Clamp

Ø 100
Ø 120
Ø 150



DMYP - 156
Casting Elbow

Ø 115
Ø 127
Ø 140
Ø 170
Ø 220



DMYP - 157
Cyclone Shut Off Damper

Ø 85
Ø 100 Ø 140
Ø 120 Ø 150
Ø 130 Ø 180



DMYP - 158
Hand Brush



DMYP - 159
Bunker Bag Belt



DMYP - 160
Pipe Cleaner Brush

Ø 100
Ø 120
Ø 130
Ø 140
Ø 150



DMYP - 161
Air Staple Gun



DMYP - 162
Mechanical Staple Gun



DMYP - 163
Staple Gun Wire

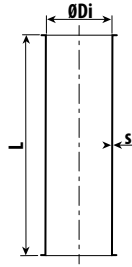


DMYP - 164
Silicon Gun - Silicon



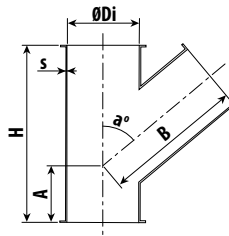
DMTP - 101
Straight Pipe

Code	ØDi	L	s
DMTP-101	100	1975	1
	120	1975	1
	150	1975	1
	200	1975	1
	250	1975	1
	300	1975	2



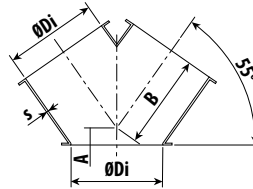
DMTP - 102
Branch Pipe Asymmetric

Code	ØDi	H	s	a°	A	B
DMTP-102	100	250	1	50	50	200
	120	300	1	50	50	250
	150	360	1	50	50	300
	200	515	1	50	50	430



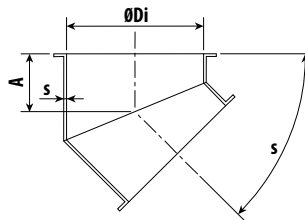
DMTP - 103
Branch Pipe Symmetric

Code	ØDi	a°	s	A	B
DMTP-103	120	55	1	14	111
	150	55	1	20	135
	200	55	1	28	180
	250	55	1	90	230
	300	55	2	100	270



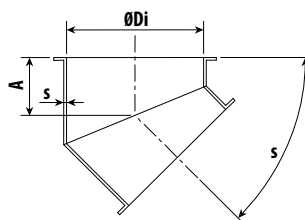
DMTP - 104
Elbow 45 - 90

Code	ØDi	a°	s	A
DMTP-104	120	45 ... 90	1	60
	150	45 ... 90	1	50
	200	45 ... 90	1,5	90



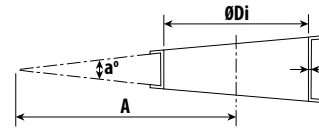
DMTP - 105
Elbow 55o

Code	ØDi	a°	s	A
DMTP-105	150	55	1	70
	200	55	1,5	80
	250	55	1,5	90
	300	55	2	100



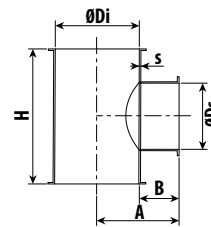
Code	$\varnothing Di$	a°	s	A
DMTP-106	120	5	1,00	150
	120	10	1,00	150
	120	15	1,00	150
	120	22,5	1,00	135
	150	5	1,00	150
	150	10	1,00	150
	150	15	1,00	150
	150	22,5	1,00	150
	200	10	1,00	250
	200	22,5	1,00	170
250	10	1,00	250	

DMTP - 106
Segment 5o - 10o - 15o - 22,5o



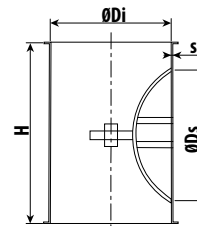
DMTP - 107
Inspection (T-Shape)

Code	$\varnothing Di$	$\varnothing Ds$	H	s	A	B
DMTP-107	120	94	150	1,00	70	10
	150	94	150	1,00	85	10



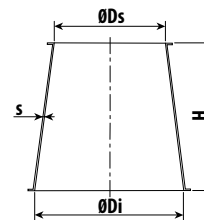
DMTP - 108
Inspection Pipe With Hinged Cover

Code	$\varnothing Di$	$\varnothing Ds$	H	s
DMTP-108	200	100	193	1,00
	250	100	193	1,00
	300	100	193	2,00



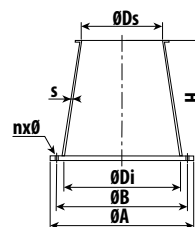
DMTP - 109
Flanged Cone

Code	$\varnothing Di$	$\varnothing Ds$	H	s
DMTP-109	120	100	50	1,00
	150	120	50	1,00
	150	120	100	1,00
	200	120	150	1,00
	200	150	100	1,00



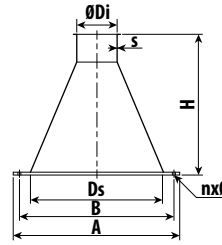
DMTP - 110
Flanged Cone

Code	$\varnothing Di$	$\varnothing Ds$	H	s	$n \times \varnothing$	A	B
DMTP-110	120	100	50	1,00	6 x 6	156	145
	150	120	50	1,00	6 x 6	190	175



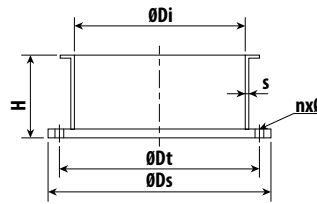
DMTP - 111 Bagging Cone

Code	ØDi	ØDs	H	s	nxØ	A	B
DMTP-111	120	180	425	1,00	4 x 12	250	224
	150	180	425	1,50	4 x 12	250	224



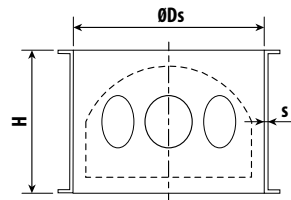
DMTP - 112 Flanged Spout

Code	ØDi	ØDs	ØDt	nxØ	H	s
DMTP-112	120	156	145	6 x 6	25	1,00
	150	190	175	6 x 6	25	1,00
	200	240	225	6 x 6	50	1,00
	250	290	275	6 x 6	50	1,00
	300	340	325	8 x 6	50	2,00



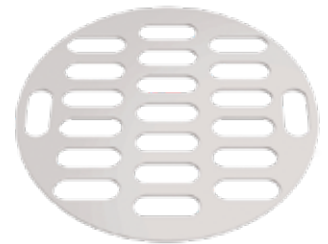
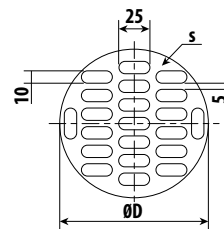
DMTP - 113 False Air Inlet

Code	ØDi	H	s	Number of Hole
DMTP-113	120	90	1,00	3
	150	90	1,00	6



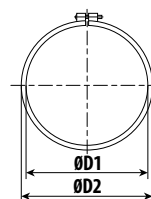
DMTP - 114 Screen

Code	ØDi	H	Number of Hole
DMTP-114	120	130	1,50
	150	160	1,50



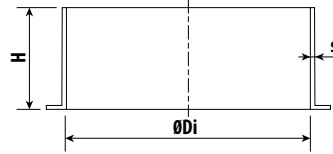
DMTP - 115 Tension Ring

Code	ØD1	ØD2	2	H
DMTP-115	124	135	1,00	6
	129	140	1,00	6
	154	165	1,00	6
	165	176	1,00	6
	204	215	1,00	6



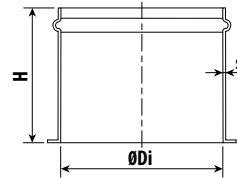
DMTP - 116 Weld on Connection Piece

Code	ØDi	H	s
DMTP-116	120	25	1,00
	150	25	1,00
	200	25	1,00
	250	25	1,00
	300	25	1,50



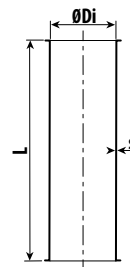
DMTP - 117 Hose Connection

Code	ØDi	H	s
DMTP-117	120	100	1,00
	150	100	2,00



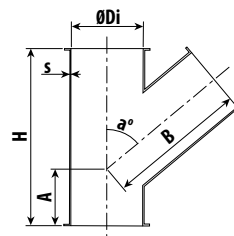
DMTP - 118 Straight Pipe(Chrome)

Code	ØDi	H	s
DMTP-118	120	1995	0,80
	150	1995	1,00
	200	1995	1,20
	250	1995	1,20
	300	1995	1,50



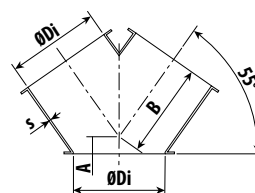
DMTP - 119 Branch Pipe Asymmetric (Chrome)

Code	ØDi	H	s	a°	A	B
DMTP-119	100	250	1	50	50	200
	120	300	1	50	50	250
	150	360	1	50	55	300
	200	515	1	50	85	430



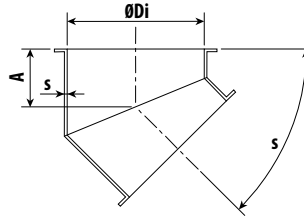
DMTP - 120 Branch Pipe Symmetric (Chrome)

Code	ØDi	a°	s	A	B
DMTP-120	100	60	1,00	55	155
	120	53	1,00	55	220
	150	66	1,00	65	275
	200	60	1,00	80	290



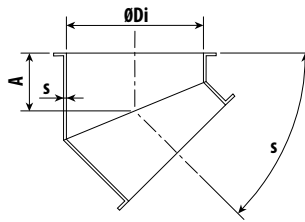
DMTP - 121
Elbow 45 - 90 (Chrome)

Code	ØDi	a°	s	A
DMTP-122	120	45 ... 90	0,80	60
	150	45 ... 90	1,00	50
	200	45 ... 90	1,00	90



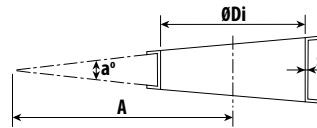
DMTP - 122
Elbow 55o (Chrome)

Code	ØDi	a°	s	A
DMTP-122	150	55	1	70
	200	55	1,5	80
	250	55	1,5	90
	300	55	2	100



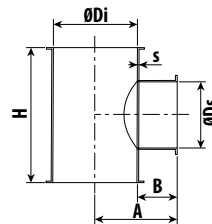
DMTP - 123
Elbow 55o (Chrome)

Code	ØDi	a°	s	A
DMTP-123	120	5	0,8	150
	120	10	0,8	150
	120	15	0,8	150
	120	22,5	0,8	135
	150	5	1,00	150
	150	10	1,00	150
	150	15	1,00	150
	150	22,5	1,00	150
	200	10	1,20	250
	200	22,5	1,20	170
	250	10	1,20	250



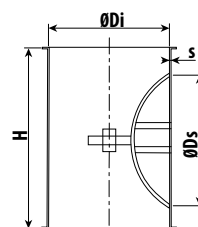
DMTP - 124
Inspection (T-Shape)(Chrome)

Code	ØDi	ØDs	H	s	A	B
DMTP-124	120	94	150	1,00	70	10
	150	94	150	1,00	85	10



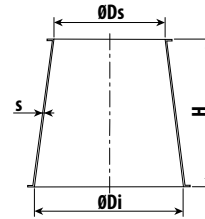
DMTP - 125
Inspection Pipe With Hinged Cover (Chrome)

Code	ØDi	ØDs	H	s
DMTP-125	200	100	195	1,20
	250	100	245	1,20
	300	100	245	1,50



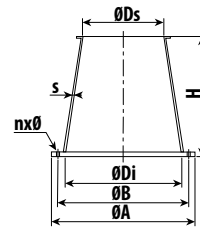
DMTP - 126
Flanged Cone (Chrome)

Code	$\varnothing Di$	$\varnothing Ds$	H	s
DMTP-126	120	105	35	0,80
	150	120	43	1,00
	200	150	60	1,20
	250	200	80	1,20
	300	250	80	1,50



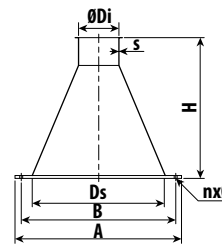
DMTP - 127
Flanged Cone (Chrome)

Code	$\varnothing Di$	$\varnothing Ds$	H	s	$nx\varnothing$	A	B
DMTP-127	120	100	50	0,80	6 x 6	156	145
	150	120	50	1,00	6 x 6	190	175



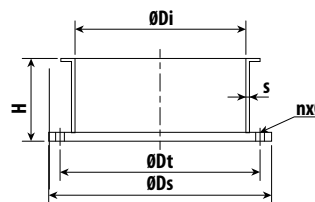
DMTP - 128
Bagging Cone (Chrome)

Code	$\varnothing Di$	$\varnothing Ds$	H	s	$nx\varnothing$	A	B
DMTP-128	120	180	425	0,80	4 x 12	250	224
	150	180	425	1,50	4 x 12	250	224



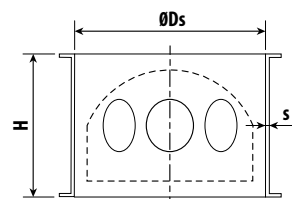
DMTP - 129
Flanged Spout (Chrome)

Code	$\varnothing Di$	$\varnothing Ds$	$\varnothing Dt$	$nx\varnothing$	H	s
DMTP-129	120	156	145	6 x 6	28	0,80
	150	190	175	6 x 6	28	1,00
	200	240	225	6 x 6	50	1,20
	250	290	275	6 x 6	50	1,20
	300	340	325	8 x 6	50	1,50

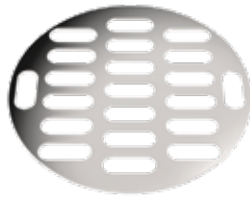


DMTP - 130
False Air Inlet (Chrome)

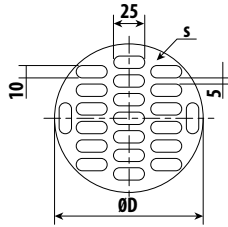
Code	$\varnothing Di$	H	s	Number of Hole
DMTP-130	120	90	1,00	3
	150	90	1,00	6
	200	90	1,20	6



DMTP - 131
Screen (Chrome)



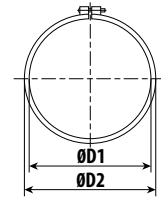
Code	Type	ØD	s
DMTP-131	120	128	1,00
	150	158	1,00
	200	208	1,00



DMTP - 132
Tension Ring (Chrome)



Code	ØD1	ØD2	s	H
DMTP-132	124	135	1,00	6
	129	140	1,00	6
	154	165	1,00	6
	165	176	1,00	6
	204	215	1,00	6



DMTP - 133
Weld on Connection Piece (Chrome)



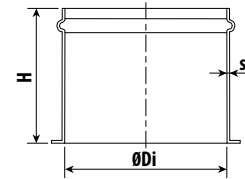
Code	ØDi	H	s
DMTP-133	120	25	0,8
	150	25	1,00
	200	25	1,00
	250	25	1,00
	300	25	1,20



DMTP - 134
Hose Connection (Chrome)



Code	ØDi	H	s
DMTP-134	120	100	0,8
	150	100	1,00



DMTP - 135
Fork Flap(Chrome)



DMTP - 136
Stove injector



DMTP - 137
Stove injector (Chrome)



DMTP - 138
Flour Clamp (Chrome)



DMYP - 165
Feeder Reducer Motor (Bonfiglioli)



Code	Type	Bond	Power (kw)
DMYP-165	VF49	i : 14	0,75 - 1400 d/dk
	VF49	i : 10	0,75 - 1400 d/dk

DMYP - 166
Feeder Reducer Motor (Nord)



Code	Type	Bond	Power (kw)
DMYP-166	SKF1S150 F-IEC80-80 LH/4	i : 10	0,75 - 1400 d/dk
	SKF1S150 F-IEC80-80 LH/4	i : 15	0,75 - 1400 d/dk
	SKF1S150 F-IEC80-80 LH/4	i : 7,5	0,75 - 1400 d/dk
	SKF1S150 F-IEC80-80 LH/4	i : 12,5	0,75 - 1400 d/dk

DMYP - 167
Trieur Reducer Motor (Bonfiglioli)



Code	Type	Power (kw)
DMYP-167	V75	1,5 - 40 d/dk

DMYP - 168
Trieur Reducer Motor (Nord)



Code	Type	Bond	Power (kw)
DMYP-168	SK 9012	34,81	0,75 - 1400 d/dk
	SK 9022	39,77	0,75 - 1400 d/dk

**DMYP - 169
Reducer Motor**



**DMYP - 170
Motor
Motor**



**DMYP - 171
Reducer Motor (Italvibras)**



Code	Type	Size	Static Moment*		Centrifugal Force				Weight		Max Input Power		Max. Current (A)		iA/iN	
			(Kgmm)		(Kg)		(Kn)		(Kg)		(W)		(400V)	(460V)	iA/iN	
			50 Hz	60 Hz	50 Hz	60 Hz	50 Hz	60 Hz	50 Hz	60 Hz	50 Hz	60 Hz	50 Hz	60 Hz	50 Hz	60 Hz
DMYP-171	MVSI 15/35 - S02	00	12,0	12,0	30,4	45,5	0,30	0,43	5,60	5,60	85	95	0,21	0,20	1,78	1,95
	MVSI 15/80 - S02	01	31,0	21,0	77,6	76,1	0,76	0,75	6,70	6,40	85	95	0,21	0,20	1,78	1,95
	MVSI 15/100 - S02	01	38,9	31,0	97,9	112	0,96	1,10	7,10	6,70	85	95	0,21	0,20	1,78	1,95
	MVSI 15/200 - S02	10	84,2	58,8	213	214	2,09	2,10	12,5	11,7	170	170	0,41	0,40	2,34	2,75
	MVSI 15/400 - S02	20	163	113	412	411	4,04	4,03	19,0	18,2	300	350	0,60	0,60	3,33	3,50
	MVSI 15/550 - S02	20	219	163	552	592	5,42	5,81	20,4	19,0	300	350	0,60	0,60	3,33	3,50
	MVSI 15/700 - S02	30	286	209	720	760	7,06	7,46	27,5	26,2	525	665	0,92	0,98	3,48	3,43
	MVSI 15/900 - S02	30	357	286	900	1037	8,83	10,2	30,0	27,5	525	665	0,92	0,98	3,48	3,43
	MVSI 15/110 - S02	35	415	271	1045	982	10,3	9,63	35,0	30,5	550	680	0,95	0,95	4,45	4,89

(*) Working Moment = 2x Static Moment

Code	Type	Size	Static Moment*		Centrifugal Force				Weight		Max Input Power		Max. Current (A)		iA/iN	
			(Kgmm)		(Kg)		(Kn)		(Kg)		(W)		(400V)	(460V)	iA/iN	
			50 Hz	60 Hz	50 Hz	60 Hz	50 Hz	60 Hz	50 Hz	60 Hz	50 Hz	60 Hz	50 Hz	60 Hz	50 Hz	60 Hz
DMYP-171	MVSI 10/40 - S02	10	30,1	30,1	35,5	49,0	0,331	0,476	9,70	9,70	120	135	0,30	0,30	1,90	2,07
	MVSI 10/100 - S02	10	84,2	84,2	94,3	136	0,925	1,33	12,5	12,5	120	135	0,30	0,30	1,90	2,07
	MVSI 10/200 - S02	20	163	163	183	264	1,80	2,59	19,0	19,0	185	205	0,50	0,50	2,72	3,10
	MVSI 10/310 - S02	30	286	209	321	338	3,15	3,32	27,5	26,2	350	380	0,72	0,68	2,63	2,79
	MVSI 10/550 - S02	35	457	457	512	737	5,02	7,23	36,5	36,5	350	380	0,75	0,68	2,53	3,68
	MVSI 10/650 - S02	35	580	457	650	737	6,37	7,23	41,0	36,5	350	380	0,75	0,68	2,53	3,68
	MVSI 10/810 - S02	40	723	561	809	905	7,94	8,88	48,0	44,0	680	760	1,40	1,35	2,79	3,33
	MVSI 10/1110 - S02	50	1012	715	1132	1151	11,1	11,3	58,0	51,0	750	750	1,65	1,50	3,33	4,13
	MVSI 10/1400 - S02	50	1274	921	1424	1483	14,0	14,5	66,0	59,5	950	1000	1,80	1,70	3,05	3,65

(*) Working Moment = 2x Static Moment

DMYP - 171
Reducer Motor (Kem-P)

Kem-P
VIBRATION MOTORS



Code	Type	Size	RPM		Static Moment*		Centrifugal Force				Weight		Max Input Power		Max. Current (A)	
					(Kgmm)		(Kg)		(Kn)		(Kg)		(W)		(400V)	(460V)
			50 Hz	60 Hz	50 Hz	60 Hz	50 Hz	60 Hz	50 Hz	60 Hz	50 Hz	60 Hz	50 Hz	60 Hz	50 Hz	60 Hz
DMYP-172	EVM 20/15	01	1500	1800	7,2	6,0	20	24	0,196	0,235	4,2	4	80	85	0,20	0,20
	EVM 30/15	01	1500	1800	12,4	9,3	31	34	0,304	0,334	4,75	4,75	80	85	0,20	0,20
	EVM 60/15	01	1500	1800	21,7	15,5	55	56	0,540	0,549	5,25	4,9	95	105	0,21	0,21
	EVM 90/15	01	1500	1800	31,0	21,7	83	89	0,814	0,873	6	5,6	95	105	0,21	0,21
	EVM 200/15	02	1500	1800	81,2	56,4	207	204	2,031	2,001	10,8	9,7	180	190	0,45	0,37
	EVM 250/15	02	1500	1800	95,3	66,1	243	239	2,384	2,345	12	11	240	270	0,52	0,45
	EVM 300/15	03-a	1500	1800	121,8	84	311	306	3,051	3,002	17,2	15,9	270	285	0,60	0,55
	EVM 400/15	03-b	1500	1800	160	114	404	413	3,963	4,052	18,6	16,9	310	370	0,66	0,66
	EVM 520/15	03-c	1500	1800	199	160,6	500	582	4,905	5,709	20,5	19,2	340	400	0,72	0,71
	EVM 520/15	03-a	1500	1800	282	191	709	692	6,955	6,789	28	25,6	475	525	0,92	0,90

(*) Working Moment = 2x Static Moment

Code	Type	Size	RPM		Static Moment*		Centrifugal Force				Weight		Max Input Power		Max. Current (A)	
					(Kgmm)		(Kg)		(Kn)		(Kg)		(W)		(400V)	(460V)
			50 Hz	60 Hz	50 Hz	60 Hz	50 Hz	60 Hz	50 Hz	60 Hz	50 Hz	60 Hz	50 Hz	60 Hz	50 Hz	60 Hz
DMYP-172	EVM 200/15	03-a	1000	1200	160,6	160,6	180	259	1,766	2,541	19	19	240	280	0,53	0,54
	EVM 270/15	03-b	1000	1200	199	199	222	320	2,178	3,139	20,5	20,5	260	300	0,55	0,56
	EVM 3900/15	04-a	1000	1200	282	282	315	454	3,090	4,454	29,2	29,6	320	350	0,70	0,68
	EVM 530/15	04-b	1000	1200	437	355	578	624	5,670	6,043	36,8	33	450	520	0,95	0,95
	EVM 750/15	05-a	1000	1200	619	432	750	810	7,358	7,475	47,3	44,8	540	600	1,05	0,98
	EVM 1000/15	05-b	1000	1200	826	577	980	1058	9,614	9,761	54,2	51	720	800	1,40	1,30
	EVM 1200/15	05-c	1000	1200	1087	743	1215	1197	11,919	11,743	58,4	52,8	760	810	1,44	1,44
	EVM 1300/15	05-c	1000	1200	1208	826	1350	1330	13,244	13,047	60	54,5	800	900	1,60	1,60

DMYP - 173
Vibro Motor (Oli)
Reducer Motor (Oli)



Code	Type	Size	Working Torque (kg/cm)	FC Max. (kg)	Power (W)	A. Max (400V)	Weight (kg)
			50 Hz	50 Hz	50 Hz	50 Hz	50 Hz
DMYP-173	MVE 40/15	10	2,55	32	40	0,31	7,0
	MVE 90/15	20	7,16	90	90	0,26	12,6
	MVE 200/15	30	14,57	183	160	0,49	22
	MVE 400/15	40	30,88	388	300	0,84	24
	MVE 500/15	40	41,23	518	350	1,06	28
	MVE 700/15	50	55,16	693	620	1,32	33
	MVE 1100/15	50	83,18	1045	650	1,40	54

Code	Type	Size	Working Torque (kg/cm)	FC Max. (kg)	Power (W)	A. Max (400V)	Weight (kg)
			50 Hz	50 Hz	50 Hz	50 Hz	50 Hz
DMYP-173	MVE 50/1	30	7,16	40	120	0,30	12,8
	MVE 100/1	30	17,91	100	120	0,30	13,5
	MVE 200/1	40	33,13	185	180	0,53	21
	MVE 300/1	50	55,16	308	350	0,67	30
	MVE 500/1	50	89,55	500	350	0,75	36
	MVE 800/1	60	139,87	781	680	1,29	59
	MVE 1100/1	60	191,10	1067	750	1,42	68



DMYP - 174
Enzyme Meter (5000)



DMYP - 175
Enzyme Meter (5100)



DMYP - 176
HE 50 Moisture Meter Device



DMYP - 177
Moisture Meter Device (1600)



DMYP - 178
Ash Furnace



DMYP - 179
Ash Furnace Accessories



DMYP - 180
Circular Shaking Laboratory Sieve



DMYP - 181
Sieve Shaking Machine



DMYP - 182
Sedimentation Device



DMYP - 183
Gluten Index (2100)



DMYP - 184
Sedimentation Accessories



DMYP - 185
Analytic Scale



DMYP - 186
Gluten Washing Device (6000)



DMYP - 187
Gluten Washing Device (6100)



DMYP - 188
Dry Gluten Device 25 SS (Glutork)



**DMYP - 189
Gluten Bowl**



**DMYP - 190
Roller Mills Mill (1000)**



**DMYP - 191
Roller Mills Mill (1500)**



**DMYP - 192
Roller Mills Mill (4000)**



**DMYP - 193
Roller Mills Mill (4500)**



**DMYP - 194
Gluten and Sediment Scale**



**DMYP - 195
Wheat Shear**



**DMYP - 196
Flour Analysis Sieve**



**DMYP - 197
Wheat Analysis Sieve**



**DMYP - 198
Hectoliter**



**DMYP - 199
Sample Divider**



**DMYP - 200
Sample Taking Sinker**



**DMYP - 201
Sample Taking Sinker (10500)**



**DMYP - 202
Damp Meter (Brake Model)**



**DMYP - 203
Damp Meter (Squeeze Model)**



DMPS - 101
Pneumatik Tubing



Code	D	D1	Part No
PUN-6x1-BL	6	4	159664
PUN-4x0,75-BL	4	2,6	159662

DMPS - 102
Push-in L-Fitting



Code	D	D1	Part No
QSL-1/8-4	R1/8	4	153045
QSL-3/8-6	R3/8	6	190660

DMPS - 103
Push-in T-Connector



Code	D	D1	Part No
QSMT-6	6	6	153367

DMPS - 104
Push-in T-Fitting



Code	D	D1	Part No
QST-1/4-6	R1/4	6	153108

DMPS - 105
Push-in L-Fitting



Code	D	D1	Part No
QSML-1/8-6	R1/8	6	153336

DMPS - 106
Pneumatik Multi Distributor



Code	D	D1	Part No
QSLV2-1/4-6	R1/4	6	153213

DMPS - 107
Push-in T-Fitting



Code	D	D1	Part No
QST-3/8-6	R3/8	6	190670

DMPS - 108
Push-in Fitting



Code	D	D1	Part No
QSM-M5-4	M5	4	1533046

DMPS - 109
Push-in L-Fitting



Code	D	D1	Part No
QSML-M5-6	M5	6	153335
QSML-M5-4	M5	4	153333

DMPS - 110
Push-in Fitting



Code	D	D1	Part No
QS-1/8-6	R1/8	6	153002
QS-1/4-6	R1/4	6	153003
QS-3/8-6	R3/8	6	190645

DMPS - 111
Push-in T-Fitting



Code	D	D1	Part No
QSMTL-1/8-6	R1/8	6	153364

DMPS - 112
Push-in T-Fitting



Code	D	D1	Part No
QSMT-1/8-4	R1/8	4	153355
QSMT-1/8-6	R1/8	6	153357

DMPS - 113
Silencers



Code	D	D1	Part No
U-1/8	G1/8	15,2	2307

DMPS - 114
Silencers



Code	D	Part No
U-M5	M5	4645

DMPS - 115
Silencers



Code	D	D1	Part No
UC-1/8	G1/8	13,8	161419

DMPS - 116
Electrical Limit Key



DMPS - 117
Reducing Nipple



Code	D	D1	Part No
D-1/4 I-3/8A	G1/4	G3/8	3581

DMPS - 118
Nut



Code	D	D1	Part No
MS4-WRS	6	36	532187

DMPS - 119
One-Way Flow Control Valves



Code	D	D1	Part No
GRLA-M5-QS-6-D	M5	QS-6	193139

DMPS - 120
Front Panel Valves and Actuator



Code	Description	Part No
N-22-SW	Selection Switch	532187

**DMPS - 121
Socket**

Code	Cable Connection	Part No
MSSD-F	Screw Terminal	34431



**DMPS - 122
Solenoids**

Code	Description	Part No
MSSD-F	24V DC - 42V AC	4527
MLH-230V AC	230V AC	535890



**DMPS - 123
Swivel Flange**

Code	Part No
MSSD-F	34431



**DMPS - 124
Swivel Flange**

Code	Part No
SNCB-32	34431



**DMPS - 125
Clevis Feet**

Code	Part No
LNB-12/16	6058



**DMPS - 126
Valves, Mechanically Actuated**



**DMPS - 127
Front Panel Valves and Actuator**

Code	Valve Function	Part No
SV-3-M5	3/2 Way Valve	6817



**DMPS - 128
Solenoid Valves**

Code	Valve Function	Part No
SV-3-M5	G1/8	19758



**DMPS - 129
Pneumatic Valves**

Code	Pneumatic Connection	Part No
VL-5-1/8-B	G1/8	34431



**DMPS - 130
Pneumatic Pressure Show Lamp**

Code	Diameter(Ø)
N-22-SW	6 - 8 (mm)
	9 - 11 (mm)



**DMPS - 131
Filter Regulators**



Type	Condensafe Drain	Connection	Part No
LFR-1/4-D-0-MINI	Turned Manuel	G1/4	162687

**DMPS - 132
Filter Regulators**



Type	Condensafe Drain	Connection	Part No
MS-LRF-1/4-D7-ERM-AS	Turned Manuel	G1/4	529156

**DMPS - 133
Standart Cylinder**



Type	Piston Ø (mm)	Stroke (mm)	Part No
DSBC-32-50-PPVA-N3	32	50	1376424
DSBC-63-100-PPVA-N3	63	100	1383582

**DMPS - 134
Standart Cylinder**



Type	Piston Ø (mm)	Stroke (mm)	Part No
DSNU-12-100-P-A	12	100	19194
DSNU-25-10-P-A	25	10	19218

**DMPS - 135
Pressure Gauges**



Code	Norminal Size (mm)	Pneumatic Connection	Oprationg Pressure	Display Range	Part No
MA-40-10-R1/8-E-RG	40	R1/8	0-10(bar)	0-10	525725



Sieve Frame

ANTIBACTERIAL SIEVE FRAMES

Organic plastic sieve frame

It does not harm human health with its antibacterial feature

ONE PIECE MOST DURABLE PRODUCT

One-piece design without mounting material is effective against breakage.

Oval corners and flat surfaces designed to prevent wear reduce friction.

Oval corners that do not accumulate in the corners provide ease of cleaning and maintenance.

It is durable and suitable for long-term use with its one-piece structure.

SIEVE FRAMES THAT CHALLENGE THE YEARS

Plastic sieve frames are produced with lighter raw materials compared to wooden sieve frames.

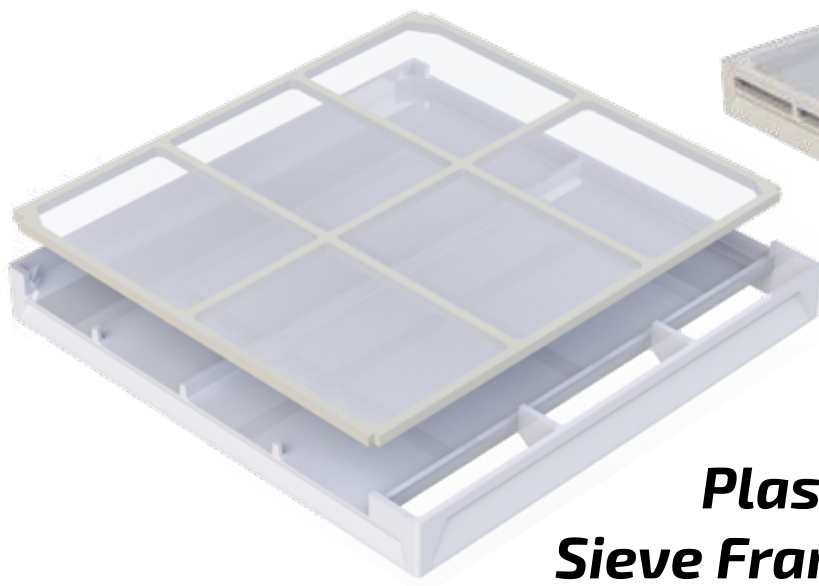
LESS ENERGY

Requires less energy to swing. It provides more efficient use with less energy.

Since it is produced in one piece, it provides extra durability against breakage.

Wooden sieve frames create extra friction due to their sharp structure.

Since the plastic sieve frames do not have sharp corners, they provide wear resistance and prolong their service life.



Plastic Sieve Frame

Wood Sieve Frame

<i>Extra Light</i>	<i>Heavy Material</i>
<i>One Piece</i>	<i>Attached Parts</i>
<i>Solid Structure</i>	<i>Sharp Structure</i>
<i>Oval Corners</i>	<i>Pointed Corners</i>
<i>Antibacterial</i>	<i>Formica Coating</i>
<i>Low Maintenance Cost</i>	<i>High Maintenance Cost</i>
<i>Energy-saving</i>	<i>High Cost</i>

Eco Prime.

PE - Impact Resistant Polyethylene

■ Unbreakable Strong Structure

Raw material reinforced against the strongest impacts and high performance against impacts.

■ Economic and Healthful

Eco Prime elevator buckets are being produced from food-grade engineering plastic.

■ Ready for Challenging Conditions

It is ready for changeable weather conditions and all impacts that may occur during transportation.



New
Generation
ECONOMIC
Elevatör
Bucket



Eco Prime.

PE Polymer - Impact Resistant Polyethylene

Always maximum resistance against hard and sudden impacts at high speeds. Thanks to its unbreakable structure, it extends your replacement times and reduces your maintenance costs. Eco Prime buckets create less friction coefficient thanks to friction channels and assist engines by reducing energy loss.

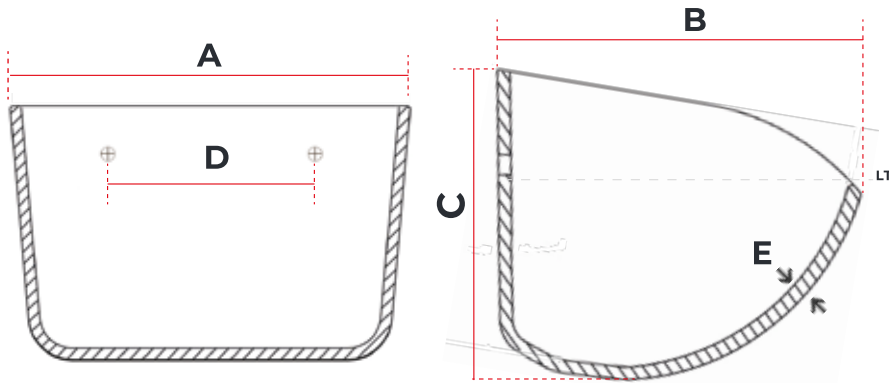
MAXIMUM PROTECTION Against Strongest Impacts

- Hardness
- Medium Frictional Resistance
- Nonbending
- Flame Retardant
- Electric Resistance
- Weather Resistant



New Generation Economic Elevator Bucket

Our Eco Prime buckets, which are produced particularly against breaking, are an economic engineering plastic product enriched with special additives against impacts.



- Dimensions are **out-to-out**.
- Mounting hole intervals can be adjusted as per your request.
- Size, Weight and Capacity May Show Tolerance of **7%**.

Product Code	Millimeters	Bucket Size			Hole Intervals		Thickness & Weight		Capacity
		A	B	C	D		E	Gr	LT - Wh
ML-10X	100x90	100	90	60	2	50	4	0,040	0,25
ML-12X	120x110	120	110	65	2	60	4	0,130	0,75
ML-14X	140x120	145	120	100	2	83	5	0,240	1,10
ML-16X	160x140	170	140	110	2	100	5	0,280	1,25
ML-18X	180x140	190	140	115	2	88	5	0,330	1,40
ML-20X	200x150	205	150	120	2	130	5	0,385	1,60
ML-22X	220x160	225	160	120	2	120	6	0,470	1,85
ML-23X	240x140	240	140	130	3	92	7	0,565	1,90
ML-24X	240x180	240	180	135	2	115	6	0,550	2,40
ML-26X	260x180	260	180	135	3	78	7	0,700	2,50
ML-28X	280x200	280	200	155	3	88	7	0,920	3,35
ML-30X	300x175	305	175	145	4	80	7,5	0,910	3,25
ML-31X	300x200	300	205	150	3	88	7	0,955	3,50
ML-32X	320x200	320	205	160	3	98	7,5	1,065	3,65
ML-33X	330x215	335	215	225	4	92	10	1,625	6,25
ML-34X	340x210	340	210	150	4	90	8	1,250	3,85
ML-35X	360x220	360	220	230	5	75	10	1,720	7,00
ML-37X	370x190	375	190	180	4	90	10	1,520	5,00
ML-38X	380x210	375	210	215	5	75	10	2,000	6,50
ML-40X	420x215	420	215	225	6	72	10	2,100	7,00

Premium.

HDPE - High Density Polyethylene

Impact Resistance

Unbreakable structure reinforced at maximum level against part impacts that may occur in high speed elevators.

Abrasion Resistance

Thanks to its high friction resistance under favour of its hardened structure and slippery surface, it is more resistant to abrasion.

Tensile strength

Although hardened against abrasion, it also provides high tensile strength thanks to its 70% form elasticity.

Always
HIGH
Performance





Premium.

HDPE - High Density Polyethylene

High Density Polyethylene and hardening additives are produced with injection technology with low speed shaft, providing maximum compression and density. In this way, it creates a more durable chain against mouth melts caused by friction. It brings together contrasting properties such as hardness and flexibility during the production phase.

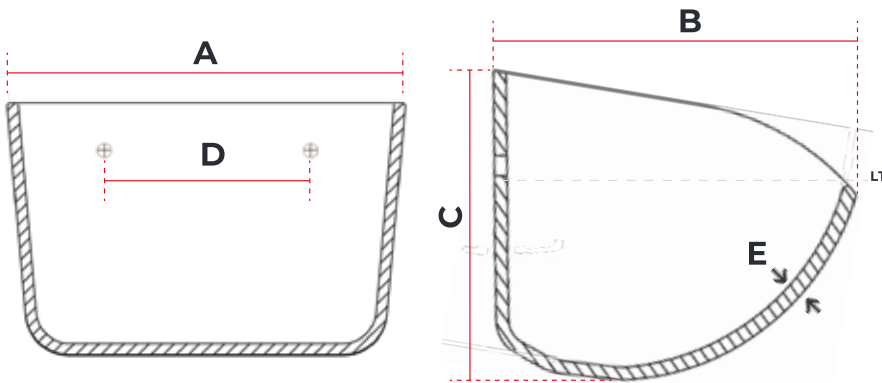
Unbreakable Structure, Maximum
ABRASION RESISTANCE
High Standard

- Abrasion Resistance
- Nonbending
- Hardness
- Tensile strength
- Flame Retardant
- Electric Resistance
- Chemical Resistance
- Weather Resistant



Premium Elevator Buckets

are reinforced with special engineering plastics against friction-induced mouth melts and high impacts.



■ Dimensions are **out-to-out**.

■ Mounting hole intervals can be adjusted as per your request.

■ Size, Weight and Capacity May Show Tolerance of **7%**.

Product Code	Millimeters	Bucket Size			Hole Intervals		Thickness & Weight		Capacity
		A	B	C	D		E	Gr	LT - Wh
ML-10P	100x90	100	90	60	2	50	4	0,040	0,25
ML-12P	120x110	120	110	65	2	60	4	0,130	0,75
ML-14P	140x120	145	120	100	2	83	5	0,240	1,10
ML-16P	160x140	170	140	110	2	100	5	0,280	1,25
ML-18P	180x140	190	140	115	2	88	5	0,330	1,40
ML-20P	200x150	205	150	120	2	130	5	0,385	1,60
ML-22P	220x160	225	160	120	2	120	6	0,470	1,85
ML-23P	240x140	240	140	130	3	92	7	0,565	1,90
ML-24P	240x180	240	180	135	2	115	6	0,550	2,40
ML-26P	260x180	260	180	135	3	78	7	0,700	2,50
ML-28P	280x200	280	200	155	3	88	7	0,920	3,35
ML-30P	300x175	305	175	145	4	80	7,5	0,910	3,25
ML-31P	300x200	300	205	150	3	88	7	0,955	3,50
ML-32P	320x200	320	205	160	3	98	7,5	1,065	3,65
ML-33P	330x215	335	215	225	4	92	10	1,625	6,25
ML-34P	340x210	340	210	150	4	90	8	1,250	3,85
ML-35P	360x220	360	220	230	5	75	10	1,720	7,00
ML-37P	370x190	375	190	180	4	90	10	1,520	5,00
ML-38P	380x210	375	210	215	5	75	10	2,000	6,50
ML-40P	420x215	420	215	225	6	72	10	2,100	7,00

Exclusive.

PA NYLON - High Hardness
Impact Resistant Engineering Plastic

■ Against the Strongest Impacts

Exclusive elevator buckets are developed for maximum resistance to breaking. It can absorb all high speed impacts and eliminates the breaking.

■ High Performance in All Products

Feed, Wheat, Corn, Barley, Pasta and others
Exclusive elevator buckets are produced for high performance and durability in all of them.

■ Greater Volume, Less Waste

The elevator buckets produced by Millpart are durable and designed paying regard to high benefit and efficiency. We are always trying to find new ways to make stronger products that can be less harmful to the environment and nature with materials made of quality engineering plastics.

High
Performance in
All Products





Exclusive.

PA NYLON - High Hardness
Impact Resistant Engineering Plastic

Exclusive Elevator Buckets are being produced from special engineering plastics with high impact resistance and high friction coefficient. Exclusive buckets are being produced completely with engineering plastics for high performance. Exclusive Buckets, which show maximum performance particularly about friction-induced mouth melting, can also achieve the best results with their curved corners, lubricant channels and unique design.



MAXIMUM ENDURANCE

LOW MAINTENANCE COST Less Maintenance, **More Transport** ■

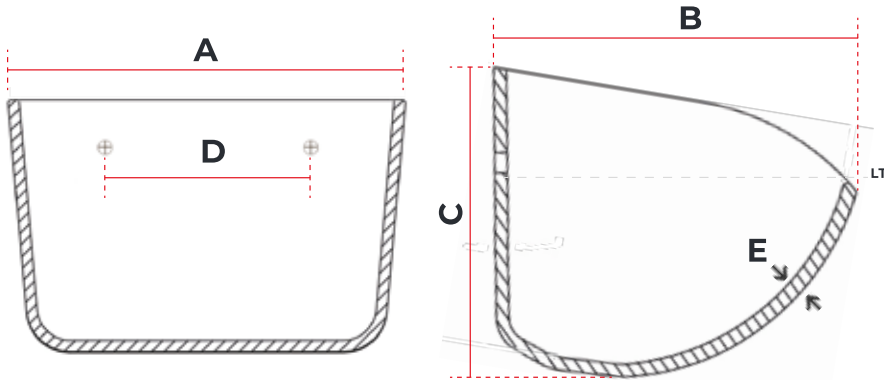
You will notice the changes in the costs due to elevator bucket replacements experienced due to mouth melts and breakings, worn out belts due to replacements, costs due to elevator halts and capacity reduction, labor and energy costs.

More Durable Than Metal, **But Lighter** ■

Exclusive Elevator Buckets are more durable and longer lasting than elevator buckets made of pressed sheet metal. You can achieve energy savings and high capacity increase up to 80% with lightweight Exclusive Buckets.

NO MORE capacity decreases due to mouth melts

Our Polyamide - Nylon Exclusive Buckets are produced against friction-induced melting with engineering plastics with high friction coefficient reinforced with special additives.



■ Dimensions are **out-to-out**.

■ Mounting hole intervals can be adjusted as per your request.

■ Size, Weight and Capacity May Show Tolerance of **7%**.

Product Code	Milimeters	Bucket Size			Hole Intervals		Thickness & Weight		Capacity
		A	B	C	D	E	Gr	LT - Wh	
ML-10E	100x90	100	90	60	2	50	4	0,050	0,25
ML-12E	120x110	120	110	65	2	60	4	0,140	0,75
ML-14E	140x120	145	120	100	2	83	5	0,255	1,10
ML-16E	160x140	170	140	110	2	100	5	0,292	1,25
ML-18E	180x140	190	140	115	2	88	5	0,345	1,40
ML-20E	200x150	205	150	120	2	130	5	0,395	1,60
ML-22E	220x160	225	160	120	2	120	6	0,490	1,85
ML-23E	240x140	240	140	130	3	92	7	0,595	1,90
ML-24E	240x180	240	180	135	2	115	6	0,570	2,40
ML-26E	260x180	260	180	135	3	78	7	0,720	2,50
ML-28E	280x200	280	200	155	3	88	7	0,940	3,35
ML-30E	300x175	305	175	145	4	80	7,5	0,930	3,25
ML-31E	300x200	300	205	150	3	88	7	0,985	3,50
ML-32E	320x200	320	205	160	3	98	7,5	1,095	3,65
ML-33E	330x215	335	215	225	4	92	10	1,645	6,25
ML-34E	340x210	340	210	150	4	90	8	1,280	3,85
ML-35E	360x220	360	220	230	5	75	10	1,750	7,00
ML-37E	370x190	375	190	180	4	90	10	1,580	5,00
ML-38E	380x210	375	210	215	5	75	10	2,090	6,50
ML-40E	420x215	420	215	225	6	72	10	2,180	7,00



gomilling
www.gomilling.com



gomilling
www.gomilling.com